

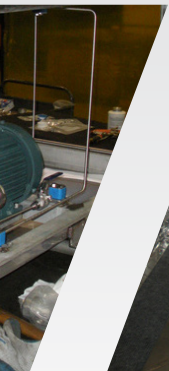
DXP



ECO-SAVE™

SEAL SUPPORT SYSTEM

Create the optimal conditions
for your dual seal, and our
environment



MICHIGAN
35 Silverdome Industrial
Park West
Pontiac, MI 48342

API PLAN 54/55

The API Plan 54/55 is the most reliable way to deliver cool, clean, stable Barrier Fluid to your dual/double seals.

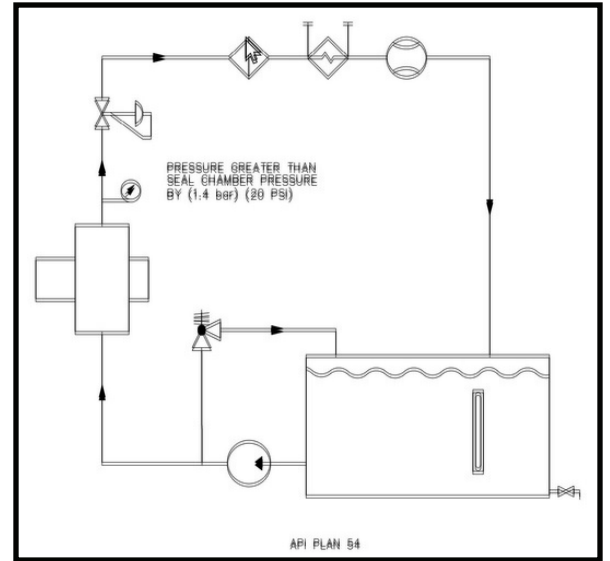
API PLAN 54

BARRIER CIRCUIT

- › Pressurized external barrier fluid system supplying clean barrier fluid to the double mechanical seal above the pump seal chamber pressure
- › 1.4 Bar / 20 PSI (greater than seal chamber pressure)

USE IN SERVICES WHERE

- ...Pumped fluid is hot*
- ...Pumped fluid is contaminated with solids*
- ...Internal flow inducer is unable to supply a sufficient flow rate*
- ...Fluids that have hazardous vapors*
- ...When pressurized air or nitrogen not available*



API PLAN 55

BUFFER CIRCUIT

- › Unpressurized external buffer fluid system supplying clean buffer fluid to the dual mechanical seal, less than pressure in pump seal chamber
- › Not to Exceed 40 PSI (always less than seal chamber pressure)

USE IN SERVICES WHERE

- ...Process fluid leakage to atmosphere should be minimized and contained*
- ...Process may solidify in contact with atmosphere*
- ...Additional heat removal from inner seal is required*
- ...When migration of mechanical seal lubrication fluid cannot be permitted to contaminate process fluid*

INCLUDED ON OUR STANDARD 15/30 GALLON API PLAN 54/55:

- › Close Coupled Electric TEFC Motor (1HP)
- › Positive displacement gear pump that delivers 1.5 GPM @1750 RPM
- › Pump has integral (non-return) and adjustable (unloading valve)
- › 150 Micron Suction Strainer with by-pass button
- › Back pressure control valve
- › Fluid level sight glass with temperature gauge
- › Filler/ breather cap
- › Inspection clean out port and drain
- › 15 or 30 gallon stainless steel sump
- › Pressure gauges on output and return line.



STANDARD ECO-SAVE UNIT
15 GALLON & 30 GALLON STAINLESS STEEL TANK



**Let Proseal Service Group Design
the Best Eco-Save Plan 54/55 to Suit Your Needs!**

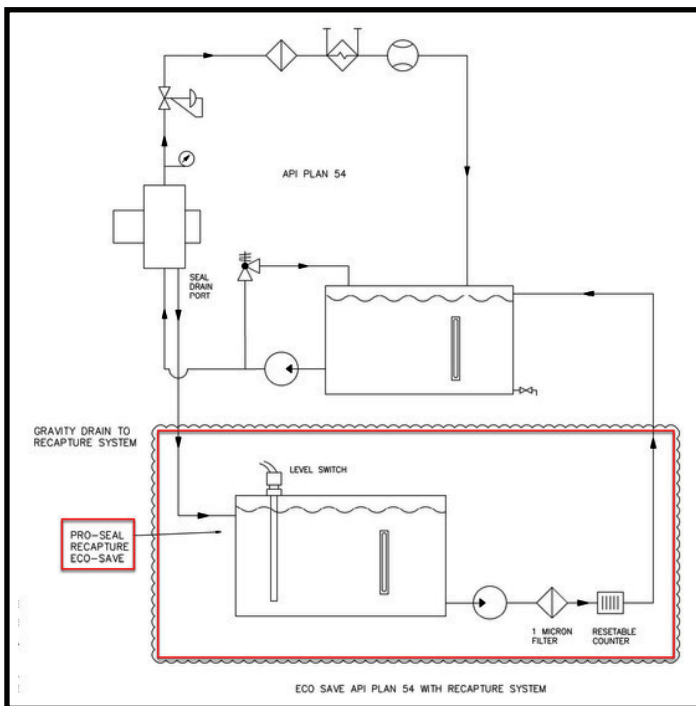


ECO-SAVE RECAPTURE SYSTEM

Today's high pressure double seals are designed to allow leakage across the seal faces. 1.5 Gallons / Day is a very common leak rate. Preserve your valuable Barrier Fluid and eliminate waste with the Eco-Save Recapture System.

ADDITIONAL BENEFITS OF THE ECO-SAVE RECAPTURE SYSTEM:

- › Extend service intervals at remote installations
- › Improve housekeeping around pump
- › Mitigate slip & fall potential around pump
- › Eliminate waste
- › Accurately determine leak rates with resettable counter



1.5 GALLONS LEAKAGE / DAY X 365 DAYS = 547.5 GALLONS /
YEAR 547.5 GALLONS @ \$60 / GALLON =

EST. \$32,805 SAVINGS PER YEAR
WITH THE ECO-SAVE RECAPTURE SYSTEM



*Preserve Your Valuable Barrier Fluid & Eliminate Waste
with the Eco-Save Recapture System*

DXP |  **ECO-SAVE™**
SEAL SUPPORT SYSTEM

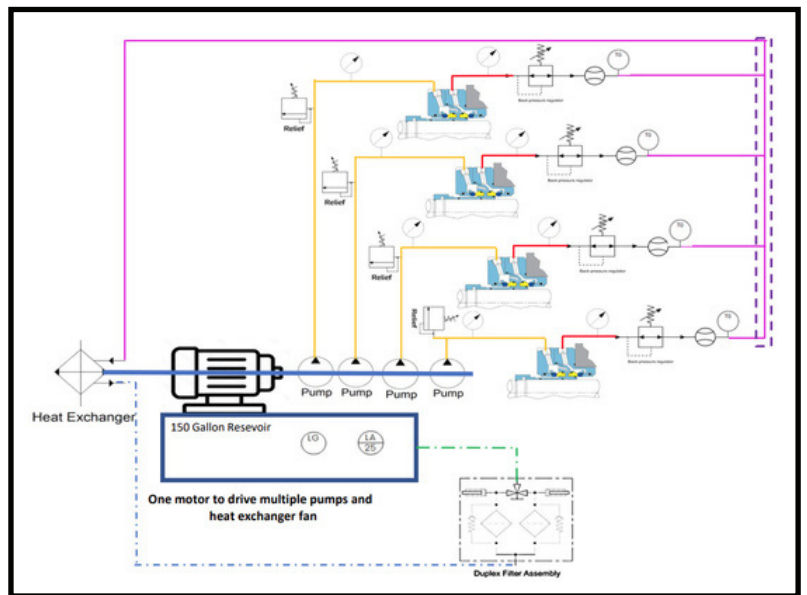
OPTIONS & SPECIAL DESIGNS

Design flexibility to meet customer-specific needs, fast design and proposal
Turn-around, short lead time or standard design assembled from stock

- › **FILTRATION:** Single, Dual in Series, Dual in Parallel
- › **HEAT EXCHANGERS:** Liquid to Liquid, Air to Liquid
- › **FLOW METERS:** Local, Instrumented
- › **LEVEL INDICATORS:** Visual on Tank, Instrumented
- › **PRESSURE SWITCH / TRANSMITTER**
- › **LEVEL SWITCH / TRANSMITTER**
- › **CLASS 1 DIV 1 MOTORS**
- › **SETUPS FOR MULTIPLE SEALS**
- › **PRESSURES TO 3600 PSI**
- › **PUMP HEAD FLOW RATES:** To Match Your Specific Need



SPACE SAVING CONDO SYSTEM



MULTI-SEAL ARRANGEMENTS FROM ONE MOTOR AND ONE SUMP



ECO-SAVE™

SEAL SUPPORT SYSTEM

Learn how ProSeal Service Group can help design the best Eco-Save Plan to suit your needs.

CONTACT US:

248-758-0500 | info@prosealsg.com