



DXP

BEARINGS & POWER TRANSMISSION LINESHEET

www.dxpe.com

800.830.DXPE



TABLE OF CONTENTS

About DXP 2–3

Bearings 4

Bearings, Bearings (Bronze), Mounted Ball and Roller, Unmounted Ball and Roller, Bearing Pullers, Chains, Sprockets, and Gears

Mechanical Power Transmission 4–5

Balls, Ball Screws/Actuators, Drives (Variable Speed), Lock Nuts and Washers, Packing, Vessel Inspection Plugs, Motors and Controls, Oil Grease and Mechanical Seals, Power Take Off, Pulleys (Variable Speeds), Retaining Rings, Rod Ends, Rotary Valves, Set Collars and Misc., Shaft Couplings, Speed Reducers, Timing Belts and Pulleys, V-Belts, Sheaves and Bushings, Vibrators

Seals 6

O-Rings and B/Us, Valve Components, Bearings/Wear Components, Misc. Products, Gas Lift Products, Retaining Rings, Seals – Oil Field and Specialty, Precision Balls, Elastomers, Plastics, Other Materials, Engineering Prototype Materials, Material Specification, Value Added Services, Technical Support

Chemicals 7

Adhesives and Sealants, Aerosols, Anti-Seize, Cleaners, Filters, Fleet and Automotive Lubricants, Food Grade Lubricants, Green Products, Industrial Lubricants, Lubrication Equipment, Oil Analysis Equipment, Paint, Penetrating Oils, Silicones and Mold Releases,

Hose 8

Adapters, Couplings, Duct Hose, Expansion Joints, Fittings, Hose Reels, Hydraulic Hose, Industrial Hose,

Metal Hose, Metric Connections, Misc. Products, PVC Hose, Teflon Hose, Thermoplastic Hose, Hose Tracking, Hose Services and Applications

Linear Motion Products 9

Acme Screws, Ball Rail Actuators, Ball Screw Actuators, Crossed-Roller Bearings, Electro-Mechanical Actuators, Flat Rail Guides, Gearheads (Planetary), Jacks, Lead Screws, Linear Rail, Linear Systems, Mechanical Actuators, Precision Mechanical Components, Recirculating Roller Assemblies, Self-Lubricating Linear Bearings, Shafting, Sleeve Bearings, Step and Servo Motors

Fluid Power..... 10–12

Fluid Power, Accumulators, Ball Valves, Couplings (Quick Disconnect), Cylinders, Electromagnetic/ Hydraulic Systems and Components, Filters, Filter Elements, Fittings and Adapters, Flanges, Gauges/ Thermometers, Hydraulic and Multipurpose Hose, Load Adapters, Manifolds, Motors, Oil Coolers, Power Packs and Rams, Power Units, Pressure Switches, Pumps, Pump/Motor Adapters, Reservoirs, Reservoir Accessories, Screw-in Cartridge Valves, Test Units, Valves, Air Dryers, Air Motors, Blow Guns, Filter, Regulators and Lubricants, Gauges/Thermometers, Hose and Fittings

Material Handling 12–13

Belting, Belting – Plastic and Wire, Bin Boxes, Casters, Rollers, and Dollies, Conveyors, Conveyor Components, Cranes, Crane Controls, Elevator Buckets, Hoists, In-Plant Offices, Mezzanines, Pallet Jacks, Carts, and Hand Trucks, Pallet Rack, Pulleys and Lagging, Scissor Lifts, Shelving, Troughing Idlers, Vibrators, Value Added Services

Clutches and Brakes..... 13

OUR COMPANY

For more than 100 years, DXP Enterprises has served as a leading industrial distribution expert in the industry. Product specialties include rotating equipment, bearings and power transmission, metalworking, industrial supplies and more. Our company continues to stay on the leading edge of technology, training, and products while attracting and retaining the best employees. From aviation and agriculture to fabrication and construction, we offer dedicated service and support for a variety of industries.



OUR DXPeople

Our people are the heart of our organization. DXPeople are dedicated, loyal and thrive on the act of serving customers. We are a close-knit family, and we care for our customers, suppliers and partners with the same hospitality. The values of our DXPeople shine through in each interaction in the field. We are driven by problem solving for the customer and providing the Xpertise and service you rely upon.



OUR COMMITMENT



At the center of our approach to corporate responsibility, DXP is committed to delivering transparency, both in our own operations and on behalf of our customers. We firmly believe that the power of active decision-making is the best way to achieve consistent and reliable sustainability. Our robust Environmental, Social, and Governance (ESG) Strategy will allow us to drive improvements wherever and whenever possible, all while serving our clients and protecting the environment. As we actively work internally and externally to meet ESG reporting standards, we encourage you to do the same.

OUR FOCUS

At DXP, our corporate strategy is simply to be the best solution for our industrial customers. Our team is comprised of customer-driven experts in a variety of specialties, including supply chain services, pump manufacturing, and renewable energy solutions.

In the best interest of our clients and partners, we maintain compliance of all statutory and regulatory requirements. DXP is committed to providing quality products and services that exceed our customer's expectations.



BEARINGS



Bearings

Aetna Bearing Co. • Andrews Products • Arguto Bearings • Auburn Ball Bearing • Aurora Bearing Co. • BCA/Bower • Browning • GG Bearings • Barden Precision Ball Bearings • Boston Gear • Cooper Bearings • Dodge • FAG • General Bearing • Heim Bearings Co. • Koyo • INA • Kaydon • Link-Belt • McGill • Miniature Precision • Morse • MRC Bearing Services • NICE • NTN • RBC Bearings • Randall Bearings • Rexnord • Rollway • SKF • SNR • SealMaster • Timken • Torrington • Fafnir •



Unmounted Ball & Roller

Aetna • Andrews • Auburn • B&RB • Barden • Berlioss • Koyo • Bremen • Consolidated • Corlett -Turner • Dixon Rulon • Fafnir • FAG • General • IKO • INA • Kaydon • Kilian • Link-Belt • Matthews • McGill • MRC • Messinger • MPB • NB • NICE • ORS • Osborn • RBC • RHP • RMB • Rollway • Schatz • SKF • Smith • Steyr • Timken • Torrington • ZKL



Bearings (Bronze)

Berg • Boston • Bunting Bronze • Engineering Metals • Federal Metal • Garlock • Graphalloy Link-Belt • Isostatic • National Bronze Metals • Oilite • Royersford • Wheeler



Mounted Ball & Roller

Bearing Casting • Berg • Boston • Jones Bearing • PTI • Brewton • Browning • Cooper • Dodge • Fafnir • FAG • Hub City • INA • Ketchie Houston • Link-Belt • McGill/MB • Miether • Moline • MRC • NTN • Randall • Rexnord • RHP • Royersford • SKF • SealMaster • Timken • Torrington



Bearing Pullers

Posi – Lock Pullers • SKF • Proto • Power Team



Chains, Sprockets & Gears

Acme • Allied Locke • Berg • Boston • Brewton • Diamond Chain Co. • Browning • Campbell • Daido • Drives, Inc. • Globe Gear • Hitachi Maxco • Jeffery • Morse • G&G Manufacturing • Link-Belt • Linn Gear Co. • Martin Sprocket • Moline • Ramsey • Renold Jeffery • Rexnord • Tsubaki • UST • Union • Webster Industries

MECHANICAL POWER TRANSMISSION



Balls

Atlas • Hartford • Hoover



Lock Nuts & Washers

SKF • Standard • Weslok • Whittet-Higgins



Ball Screws/Actuators

Duff Norton • Thomson • Joyce • Nook



Packing

Garlock • SHIMS • Artus • Berg • Lawton • Precision • Quickshim • Shopaid Standard Brand • Stilt Leg • U.S.A. Tolerance Rings



Drives (Variable Speed)

Boston Gear • Baldor • Frankilin • Vacon (Danfoss) • Drivecon • Falk • Fincor • Graham Motors & Controls • Link-Belt • Lovejoy • Reliance Electric • Reeves • Seco Drives • Sumitomo Corp.



Vessel Inspection Plugs

Sepco

MECHANICAL POWER TRANSMISSION



Motors & Controls

A.O. Smith • Baldor/Reliance • Brook
Crompton • Bodine • Boston • Browning •
Century • Dayton • Eaton-Opcon • Fincor •
Indiana General • Leeson • Lincoln Electric
• Magnatek • Marathon • Morse/Emerson •
North American Electric • Reuland Electric
• Siemens • Sterling • Sumitomo • TECO
Westinghouse • TB Woods • Toshiba • U.S.
Electrical Motors • Vacon • WEG



Oil Grease & Mechanical Seals

Chicago Rawhide/SKF • Clark • Consolidated
• Dichtomatik • EagleBurgmann • Fluid-Tek
• Gaco • Garlock/ Iso-Gard/Guardian • Gits
• Harwal • Inpro • J.M. Clipper/ Protec/
Millennium • National Oil Seals • National
Parts • NOK • Johns Manville (Parker) • SKF
Sealing Solutions • TCM • Timken • U.S. Seal



Power Take Off

G&G Manufacturing • Hub City • Neapco



Pulley's (Variable Speeds)

Dodge • Browning • Morse • Gerbing •
Hi-Lo Manufacturing • Lovejoy • Maurey
Manufacturing • Reeves • Speed Selector



Retaining Rings

Industrial • Rotor Clip • Waldes TRUARC



Rod Ends

Alinabal • Morse • Aurora • Heim • National •
Spherco



Rotary Valves

Dueblin • Duff Norton



Set Collars & Misc.

Berg • Browning • Clamp-Tite • Climax •
Collars & Couplings • Dodge • Mak-A-Key •
Ruland • Stafford



Shaft Couplings

Acme • Ajax/Reuland • Atraflex • Centa •
Jaure • Berg • Boston • Browning • Dodge
• Falk • Flexibox/Metastream • Kop-Flex •
Link-Belt • Lovejoy/ Deltaflex • Magnaloy •
Martin • Morse • Plessey • Rexnord/Thomas
• Royersford • System Components • TB
Woods • Voith • Waldron • Zurn Ameridrives •
Zurn Amerigear



Speed Reducers

Bodine Electric Co. • Bonfiglioli • Boston
Gear • ConeDrive • Curtis • Davie Brown
(Radicon) • DEMAG • Dodge • Electra-Gear
• Fairchild • Falk • Federal Gear • Grant •
Browning • Morse • Foote-Jones • Grove
Gear • Hub City • Link-Belt • Nord Gear • Ohio
Gear & Transmission • Peerless-Winsmith
• Radicon/David Brown • Rexnord • SEW
Eurodrive • Shimpo • Sterling • Sumitomo
Corp. • Winsmith • ZeroMax



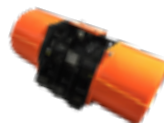
Timing Belts & Pulleys

Dodge • Masterdrive • Continental • Bestorq,
Incorporated • TB Woods • Browning • Gates
• Morse • Goodyear • Martin Sprocket



V-Belts, Sheaves & Bushings

American Metric Corp. • Berg • Continental
• Bestorq, Incorporated • B.F. Goodrich
• Browning • Dayco • Dodge • Gates •
Goodyear • Morse • Martin Sprocket •
Maurey • T.B. Woods



Vibrators

DynaPac • Global Manufacturing • Martin
Engineering

SEALS



O-Rings & B/Us

Contoured B/U's • Elastomeric • Encapsulated • Metallic • Metric Sizes • O-Ring Cord • O-Ring Kits • PEEK B/Us • PTFE • PTFE B/U's



Valve Components

Face/Bonnet Seals • HP/HT Stem Seals/Sets • Metal Replacement Parts • Non-Metallic Wear components • Standard Stem Seals/Sets • Valve Seats – All Types



Bearings/Wear Components

Composite Bearings • Metallic Bearings • Non-Metallic Thermoplastic • Piston/ Rod Bearings • Piston Rings • Wear Rings



Misc. Products

Adhesives • Back Up Rings • Large Diameter (110") • Lubricants • Machined/ Injected Plastics • Ring Joint Gaskets • Sealants • Teflon Tape • Wave Springs



Gas Lift Products

Beryllium Copper Ret Rings • Copper Washers/ Gaskets • Check Seats/Pads • PTFE Center Adapter • Soft Component Kits • Stem/ Seat Kits • TC Balls • TC Seats • Valve Cores • Vee Packings (Neoprene, Nitrile, Aflas & Molyglass)



Retaining Rings

Smalley • Rotor Clip



Seals – Oil Field & Specialty

National O-ring (Hutchinson Seal) • SKF • Garlock • Parker • Parco (Datwyler) • Harwal • Clark



Precision Balls

Ball Tech • Hoover Precision • TN Michigan • Hyatt Ball • NN Ball & Roller • Penn Ball

Elastomers

Ethylene Propylene (EPDM) • Explosive Decompression • Fluorocarbon (FKM) • Hydrogenated Nitrile (HNBR) • Neoprene (CR) • Nitrile /Buna (NBR) • Perfluoroelastomer (FFKM) • Resistant Materials (ED) • TFE/P Fluoroelastomer (TFE/P)Aflas

Plastics

Acetal • CTFE aka Kel-F • Nylon • Polytetrafluoroethylene (PTFE) • Polyphenylene Sulfide (PPS) • Polyetheretherketone (PEEK) • UHMW-PE

Other Materials

Ceramic • Graphoil • Phenolic • Variable Density Thermoplastic • Wire Mesh

Engineering Prototype Materials

Injection Molding • Machined Plastic • Machined Rubber • Metal to Rubber Bonding • Rubber to Plastic Bonding

Material Specification

API • ASTM • MIL STD • Norsok

Value Added Services

Bar Coding/Scanning Technologies • Custom Kits/Packaging • Dock To Stock Programs • EDI/EFT • Engineering Support • Integrated Supply Programs • Online Order Management • Product Training • SmartDocs • Summary Billing • Supply Chain Management • Systems Agreements • Value Management Surveys • Vendor Managed Inventory

Technical Support

Engineering Lunch & Learns • Compatibility Assessment • Material Development • Material Recommendation • Seal Design Assistance • Seal Failure Analysis • Specification Assistance • Tolerance Recommendation

CHEMICALS



Adhesives & Sealants

Agion Technologies Inc. • Camie-Campbell
• Dow Corning • Loctite • Permatex • White
Lightning • Bostik • Saf-T-Lok



Aerosols

AeroKroil • CRC Industries • Jet-Lube •
Liquid Wrench • LPS Laboratories • Miller
Stephenson • Sprayon • Super-Lube •
WD-40



Anti-Seize

Bostik • Jet-Lube • Loctite • Molykote •
Permatex • Saf-T-Lok



Cleaners

Cloverleaf Chemical • Dymon SCRUBS IN A
BUCKET • LPS Laboratories • Sprayon



Filters

Des-Case • Donaldson • DXP Filtration •
Harvard Corporation



Fleet & Automotive Lubricants

Petro Canada



Food Grade Lubricants

Bel-Ray • CRC Industries • Jet-Lube •
Micro-Lube, Inc. • Molykote • Petro-Canada
• SLFI • Sprayon • Summit Oil Co. • Super-
Lube • Ultrachem Inc. • Century Fuchs •
Keystone- Total • Kluber



Green Products

Cloverleaf-USDA Cleaners • Renewable
Lubricants



Industrial Lubricants

Dow Corning • Petro-Canada • Summit Oil
Co. • Ultrachem Inc.



Lubrication Equipment

Alemite • Custom Metalcraft • DXP Custom
Grease & Oil Lubrication Systems • Fluidall
Lubricant Storage Systems • IFH Group
• LubeSite Systems • Lubrimatic • Micro-
Lube, Inc. Chain Lubrication Equipment •
National Spencer • Oil-Rite Corporation
• Trico • Fluid Defense • Acculube • CRC
Industries • ITW ROCOL- Rustlick • LPS
Laboratories • Petro-Canada



Oil Analysis Equipment

Checkfluid Inc. • Kittiwake Products • Wear
Check



Paint

Krylon • Rust-Oleum • Sherwin-Williams



Penetrating Oils

AeroKroil • CRC Industries • Jet-Lube •
Liquid Wrench • LPS Laboratories • Sprayon
• Super-Lube • WD-40



Silicones & Mold Releases

CRC Industries • Dow Corning • Jet-Lube •
Liquid Wrench • LPS Laboratories • Sprayon

Call Us for Details on These Services

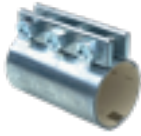
- Equipment Tagging
- ISO Particle Counting
- Oil Analysis
- Plant Surveys
- Preventive Machine
- Condition Monitoring
- Technical Seminars

HOSE



Adapters

Brennan Ind. • Eaton Aeroquip • Fittings Unlimited • Horizon • Tompkins Ind.



Couplings

Access Hose • American Couplings • Dixon • Kemper • Kuriyama • Max Couplings • Morris Couplings • New-Age Ind. • OPW Couplings • Sealfast • Todo Couplings • PT Couplings • Victaulic



Duct Hose

Flexaust • Unaflex



Expansion Joints

Proco • Kuriyama • Mercer • Metraflex • Garlock



Fittings

Access Hose • American Packing & Gasket • Anchor Fluid Power • Campbell Fittings • Dixon • Eaton Aeroquip • Eaton Weatherhead • Max Couplings • New-Age Ind. • Nephi Rubber Products • Sealfast • Tompkins Ind. • Stainless Hose Fittings • SunFlow • Boston Weatherhead Brass



Hose Reels

Reel Craft • Hannay Reels • Cox Reels • Duro Reels



Hydraulic Hose

Access Hose • Eaton Aeroquip • Eaton Weatherhead • Max Couplings



Industrial Hose

Access Hose • Eaton Boston • Gates • Goodyear • HBD Thermoid • Kuriyama • Max Couplings • New-Age Ind. • Nephi Rubber Products • Parker/ Titan • Pacific Echo • Texcel



Metal Hose

Omegaflex • Hose Master • Hose Technology • Minnesota Flexiable • Twin City Hose



Metric Connections

Brennan Ind. • Eaton Aeroquip • Euro-Power • Fittings Unlimited • Hatec • New-Age Ind. • Tompkins Ind.



Misc. Products

Alliance Plastics • Anchor Flange • BAND-IT • Fill-Rite Pumps • Hydra-Zorb Clamps • Milton Industries • Ocean-1 Cable Trays • ZSI Clamps



PVC Hose

Goodyear • Kuriyama • Pacific Echo • New-Age Ind. • SunFlow



Teflon Hose

Eaton Aeroquip • Eaton Everflex • Senior Flexonics • Teleflex



Thermoplastic Hose

Eaton Aeroquip • Eaton Synflex • Flexaust • Kuriyama



Hose Tracking

DXPrevent



Hose Services & Applications

Air • Chemical • Crimp • Industrial Hose • Material Handling • Metal • Product-certified Testing • Railcar • Reusable • Sand Blast • Steam • Suction • USDA/ 3A Food Grade • Water • Water Blast • Welding

LINEAR MOTION PRODUCTS



Acme Screws

Nook Industries • W.M. Berg



Ball Rail Actuators

INA Linear • SKF Linear Motion • Thomson Linear



Ball Screw Actuators

Duff-Norton • Thomson • Nook Industries • SKF Linear Motion



Crossed-Roller Bearings

INA Linear • SKF Linear Motion • W.M. Berg
Acme Screws • Nook Industries • W.M. Berg



Electro-Mechanical Actuators

Duff-Norton • Thomson • Nook Industries • SKF Linear Motion



Flat Rail Guides

Bishop-Wisecarver • INA Linear • SKF Linear Motion



Gearheads (Planetary)

Rexnord • Sumitomo • Parker Baside



Jacks

Joyce/Dayton • Duff-Norton • Nook Industries • Simplex



Lead Screws

Nook Industries • W.M. Berg • Linear Bearings • INA Linear • Nook Industries • Pacific Bearing • SKF Linear Motion



Linear Rail

INA Linear • Lee Linear • SKF Linear Motion • Star Linear • Thomson Linear



Linear Systems

Bishop-Wisecarver • Lee Linear • INA Linear • Pacific Bearing • Thomson Linear



Mechanical Actuators

Duff-Norton • Joyce/Dayton • Nook Industries



Precision Mechanical Components

PIC Design • Stock Drive Products/Sterling Instrument • W.M. Berg



Recirculating Roller Assemblies

INA Linear • SKF Linear Motion



Self-Lubricating Linear Bearings

Pacific Bearing • SKF Linear Motion • Thomson Linear



Shafting

INA Linear • Thomson • Nook Industries



Sleeve Bearings

Bishop-Wisecarver • Lee Linear • GGB (Glacier & Garlock) Slides • Pacific Bearing • SKF Linear Motion



Step & Servo Motors

Baldor • Parker Bayside

FLUID POWER



Fluid Power

Donaldson • Eaton • Metaris • Permco • Kawasaki • Lincoln • Peninsular • Purakal • Tanner

FLUID POWER – HYDRAULICS



Accumulators

Accumulators, Inc. • Eaton Vickers • Oil Air Products • Tobul



Fittings & Adapters

Eaton Aeroquip • Eaton Weatherhead • Tompkins



Ball Valves

Anchor Fluid Power • Behringer • Donaldson • HYDAC



Flanges

Anchor Fluid Power • Eaton Vickers



Couplings (Quick Disconnects)

CEJN Eaton Aeroquip • Hansen • SafeWay Hydraulics • Snap-tite



Gauges/Thermometers

Ametek U.S. Gauge • Donaldson • Dnamic Components • Dwyer • WIKA



Cylinders

Cross Manufactureing • Eaton Hydro-Line • Eaton Vickers • Hanna • Lion Hydraulics • Nopak • Peninsular • Purakal Cylinders, Inc. • Yates



Hydraulic & Multipurpose Hose

Eaton Aeroquip • Eaton Weatherhead • Goodyear



Electromagnetic/Hydraulic Systems & Components

Eaton Vickers



Load Adapters

Helland Engineering • WSI



Filters

Behringer • DXP Filtration • Donaldson • Eaton Vickers • Harvard Corporation • Mahle



Manifolds

Daman • Eaton • Med-Kas



Filter Elements

Behringer • Donaldson • Eaton • Flow Ezy Filters • Fluitek Corporation • KOCH • Mahle



Motors

Anchor Lamina • Permco • Metaris • Cross Manufactureing • Dynamic Components • Eaton Char-Lynn • Eaton Vickers • Kawasaki • KYB America • White Drive Products



Oil Coolers

American Industrial • Eaton Vickers • Thermal Transfer

FLUID POWER – HYDRAULICS



Power Packs & Rams

BVA Hydraulics • Enerpac • OTC • Simplex



Reservoirs

LDI Industries/Vescor • Precision Hydraulics • Trilex



Power Units

BVA Hydraulics • Eaton Vickers • OTC • Precision Hydraulics



Reservoir Accessories

Behringer • Flow Ezy Filters • Hydac • LDI Industries/Vescor • Trilex



Pressure Switches

Dwyer • Pressure Devices • Wika



Screw-in Cartridge Valves

Eaton Vickers • Eaton Integrated Hydraulics



Pumps

Cross Manufacturing • Permco • Metaris • Dynamic Components • Eaton Vickers • Kawasaki



Test Units

CEJN Eaton Aeroquip • Eaton Aeroquip • Hedland • Webtec



Pump/Motor Adapters

Trilex • LDI Industries/Vescor



Valves

Cross Manufacturing • Eaton Vickers • Kawasaki

FLUID POWER – PNEUMATICS



Air Dryers

Norgen • Arrow Pneumatics



Cylinders

ARO/Ingersoll-Rand • Eaton Hydro-Line • Eaton Vickers • Fabco-Air • Mead • Nopak • Peninsular • STC- Sizto "Tech Corp. • TPC- Tanhay Pneumatics



Air Motors

ARO/Ingersoll-Rand



Filter, Regulators & Lubricants

ARO/Ingersoll-Rand • Arrow Pneumatics • Norgen • Fabco-Air • Master Pneumatic • STC- Sizto Tech Corp. • TPC- Tanhay Pneumatics



Blow Guns

ARO/Ingersoll-Rand • CEJN • Nycoil Co. • Amflo



Couplings (Quick Disconnects)

ARO/Ingersoll-Rand • CEJN • Eaton Aeroquip • Legris & Mead • Snap-tite



Gauges/Thermometers

Ametek U.S. Gauge • Dwyer • WIKA

FLUID POWER – PNEUMATICS



Hose & Fittings

CEJN • Eaton Aeroquip • Eaton Weatherhead • Legris • Mead • Nycoil Co. • STC- Sizto Tech Corp. • TPC- Tanhay Pneumatics



Valves

ARO/Ingersoll-Rand • Fabco-Air • Mead • Snap-tite • STC- Sizto Tech Corp. • TPC- Tanhay Pneumatics

MATERIAL HANDLING



Belting

Ammeraal Beltech • Apache • Ashworth • Belt Concepts/Goodyear • Belt Service • Chemprene • Clipper Belt Lancer Co. • Flexco • Mulhern Belting • Thermoid Industries



Belting – Plastic

Habasit • Rex • Uni-chains



Belting – Wire

Ashworth • Cambridge • Maryland Wire Belt



Bin Boxes

Akro-Mils • Quantum Storage Systems



Casters, Rollers & Dollies

Albion • FEI • MHS



Conveyors – Bulk (Drag)

InterSystems • Martin • MFS/York/Stormor



Conveyors – Bulk (Elevator Legs)

KWS • Martin • Orthman Conveying Systems • Thomas Conveyor Co. • WAM Inc.



Conveyors – Bulk (Screw)

KWS • Martin • Orthman Conveying Systems • Thomas Conveyor Co. • WAM Inc.



Conveyors – Chip Handling

Enduraveyor • Eriez • Jorgensen Conveyors



Conveyor Components

Rexnord • Slideways • Solus/EPT



Conveyors – Magnetic

Bunting Magnetics • Eriez



Conveyors – Overhead

Anchor • Lauyans & Company • Rapid Industries • Richards - Wilcox



Conveyors – Package/Unit Handling

Dematic • FEI • Interroll • Omni Metalcraft Specials



Conveyors – Tabletop

Arrowhead Systems

MATERIAL HANDLING



Conveyors – Troughed Belt

The Chantland Company • InterSystems
Specials • Orthman Conveying Systems



Conveyors – Vibratory

Eriez



Cranes

Columbus McKinnon (CM) • Demag Cranes
Harrington



Crane Controls

Demag Cranes • Telemotive Remote Control



Elevator Buckets

Dura-Bucket • Allied Locke • Grain Belt
Supply Co. • Maxi-Lift • Rexnord • Tapco
4B Components



Hoists

Columbus McKinnon (CM) • Demag Cranes
• Harrington • Lift-All • Liftech Equipment •
Companies



In-Plant Offices

A-WALL Building Systems • National
Partitions • Porta-King Building Systems



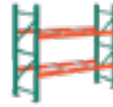
Mezzanines

Cogan • Burroughs • Equipto • Lyon



Pallet Jacks, Carts & Hand Trucks

Hodge • Meco • RB Manufacturing • Valley
Craft • Vestil Manufacturing



Pallet Rack

Lyon • Burroughs • Meco • SpaceRak



Pulleys & Lagging

The Chantland Company • Dodge • Holz
Slide Lag • Martin • PCI • Precision Pulley &
Idler • Van Gorp



Scissor Lifts

American Lifts • Autoquip • Bishamon •
Vestil Manufacturing



Shelving

Equipto • Burroughs • Hallowell • Lyon



Troughing Idlers

Hewitt-Robins • Joy Limberollers •
Stephens-Adamson



Vibrators

Global Manufacturing • Martin Engineering



Value Added Services

Fabrication & Installation • Plant Surveys •
Special Applications

CLUTCHES & BRAKES



Clutches & Brakes

Carlson • Wichita • Dana Corporation • Dings Dynamics Group • Dodge • Force Control • Formsprag Clutch • Hillard • Reliance Electric • Stearns • Warner Electric

The logo for DXP, featuring the letters 'DXP' in a bold, white, sans-serif font. A diagonal slash is positioned between the 'X' and 'P', extending from the top of the 'X' to the bottom of the 'P'.

DXP

THE INDUSTRIAL DISTRIBUTION EXPERTS

5301 Hollister Street | Houston, TX 77040
800.830.DXPE | www.dxpe.com