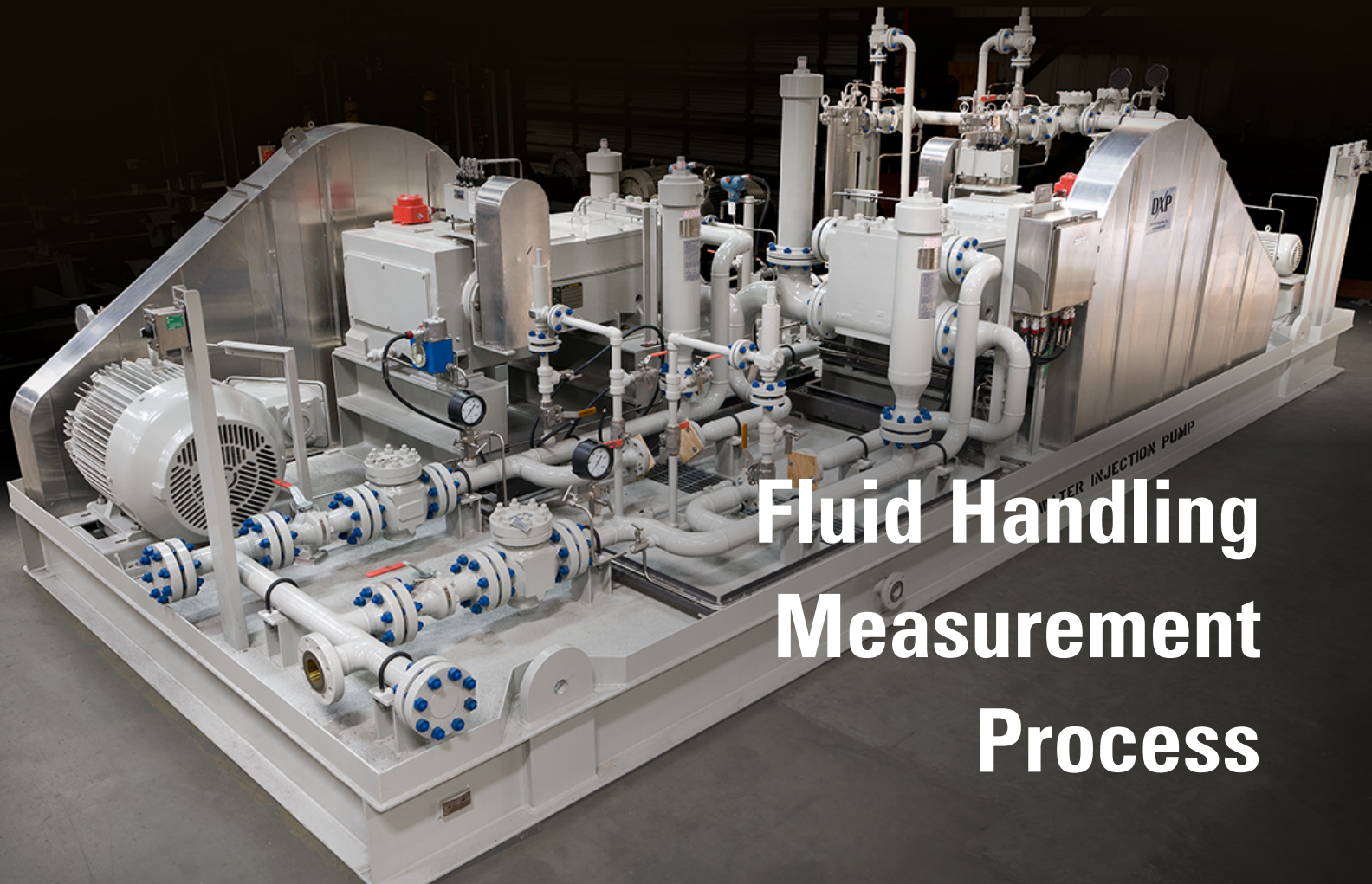


DXP

INNOVATIVE PUMPING SOLUTIONS

PRODUCTS



**Fluid Handling
Measurement
Process**

TABLE OF CONTENTS

Engine Driven Pump Packages	1
Produced Water & Injection	1–2
Oil Pipeline Skids	3
Sump Systems	4
Process Pump Packages	5
Fuel Handling Systems	6
Production Equipment	7
NGL Pumping Systems	7
Potable Water Packages	8
Firewater Pump Packages	8
Cooling Water Skids	9
Chemical Injection Systems	10
Measurement	11
Cold Weather Packages	12
Ammonia Handling Equipment	13
Fuel Gas Conditioning Equipment	14
Renewable Energy Production Equipment	15
Electric Process Heaters	15

ENGINE DRIVEN PUMP PACKAGES



Diesel Engine Driven Pump Package

Complete system includes hydraulically driven chemical injection pump, main centrifugal crude shipping pump, inlet stabilizer, controls, instrumentation, piping and valves.



Natural Gas Engine Driven Pump

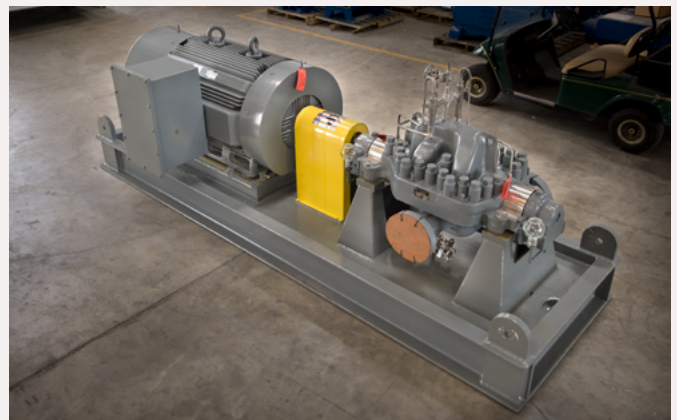
One horizontal API-610 multistage centrifugal pump driven by an 800 HP natural gas engine. Complete with fuel gas handling system, gear box, controls, piping, valves and instrumentation.

PRODUCED WATER INJECTION & DISPOSAL



Natural Gas Engine Driven Saltwater Injection Pump Skids

Natural gas engine driven saltwater injection skids consisting of a quintuplex plunger pump driven by a natural gas engine through gear box associated piping, valves, instrumentation and control panels. Each unit includes a submersible charge pump with column pipe.



Produced Water Disposal Pump Unit

Produced water disposal pump unit consisting of a three stage API centrifugal pump direct driven by an electric motor. *Dry weight: 9,500 lbs*

PRODUCED WATER INJECTION & DISPOSAL



Produced Water Injection Module

Two electric motor driven offshore produced water injection systems. Modular packages include AP1-610 multistage centrifugal pumps, drivers, PLC controls, inlet and outlet piping valves and instrumentation.



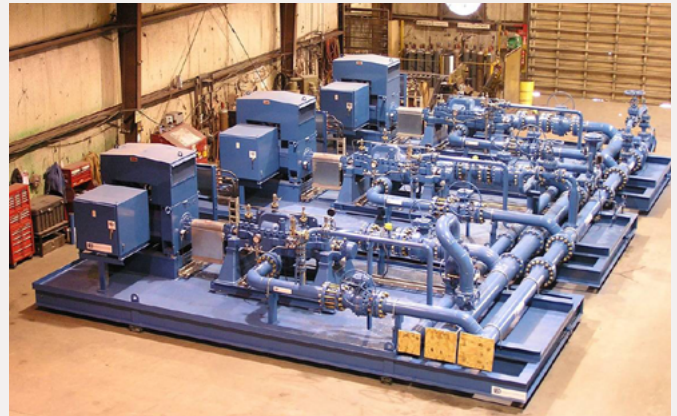
Seawater Injection Pump Package

This modular system consists of 2 x 100% triplex plunger pumps, suction stabilizer, discharge dampener, relief valves, inlet and outlet piping, instrumentation, lubrication system and controls. Driven by electric motors and v-belt drives.



Enclosed Produced Water Pump Skid

This produced water disposal module was built inside of a 14' wide by 28' long x 16.5' winterized enclosure with R13 insulation for installation in the Northern Rockies. It includes 2 x 50% PumpWorks HP Plus horizontal centrifugal pumps. Each pump driven by a 300 HP medium voltage TEFC motor. System includes piping, valves, instrumentation and a separate control building with variable frequency drives, MCC, transformers and PLC control cabinet. This system was rated for 30,000 BPD @ 400 psi differential.



Water Injection Pump Skid

This 3 x 50% water injection module, including suction and discharge headers, was built as 3 separate units for ease of shipment. Each unit included a 1500 HP medium voltage motor driven API 610 BB3 pump with all ancillary systems. This system was rated for 3000 GPM @ 1300 psi differential. Complete module was fit tested at the shop to ensure seamless installation offshore.

OIL PIPELINE SKIDS



Three Oil Export Pump Skids

Three oil export pump skids, consisting of a horizontal multistage barrel pump driven by an electric motor through a variable speed hydraulic coupling. *Dry weight: 62,778 lbs*



Oil Pipeline Skid

Oil pipeline skids, each consisting of a horizontal multistage pump driven by an electric motor. *Dry weight: 41,960 lbs*



Electric Motor Driven Pipeline Pump Module

Complete heavy crude oil pipeline pump system consisting of four triple screw pumps driven by TEFC electric motors. Module includes piping, valves, instruments, controls and variable frequency drives.

SUMP SYSTEMS



Amine Sump Skid Package—view 1



Amine Sump Skid Package—view 2

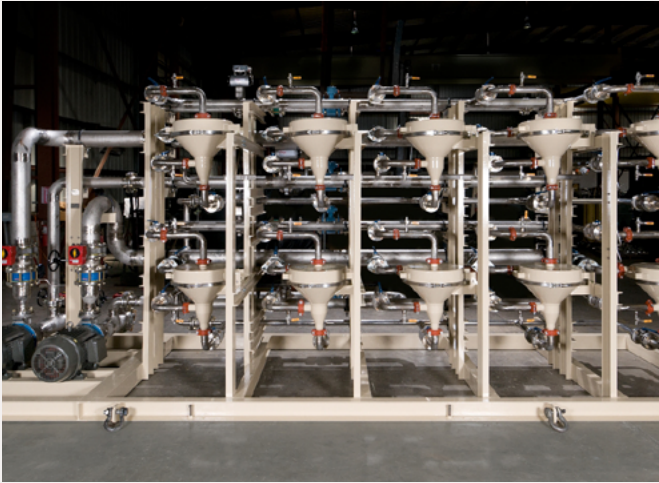
Amine sump skid package consisting of a 1180 gallon carbon steel vessel with centrifugal pump driven by an electric motor. Unit includes piping, manual and actuated valves, and instrumentation. *Dry weight: 13,270 lbs*



Sump Tanks & Sump Tank Systems

DXP Sump Systems are complete single or double wall sump tank assemblies designed to capture various industrial liquid runoff including water, hydrocarbon, chemical, etc. Each sump is fitted with leak detection, locking hatch for inspection, flame arrestor (for hydrocarbons), sump pump(s), electric motor(s), instrumentation and controls. System is designed to minimize field assembly.

PROCESS PUMP PACKAGES



Produced Water Filter Skid

Produced water filter skid consisting of ten clean-in-place filters, piping, fittings, automated valves, and instrumentation fed by two centrifugal pumps with motors on a common skid. *Size: 22'L x 6.5'W x 10'H | Dry weight: 15,000 lbs*



Compression Suction Scrubber Pumps

Compressor suction scrubber pumps complete with process pump with tandem mechanical seal and seal flush, coupled to an electric motor. Mounted on a custom DXP baseplate.



Heat Medium Circulation Pumps

Heat medium circulation pumps, each unit complete with API process pump with heat exchanger, cooled mechanical seals and casing insulation and coupled to an electric mounted on a custom DXP baseplate.

FUEL HANDLING SYSTEMS



Helicopter Refueling Package—view 1



Helicopter Refueling Package—view 2

Helicopter refueling package consisting of a stainless steel fuel pump, 2000 gallon fuel storage tank, pipe, fittings, valves, fuel filter/separator, magnetic level gauges, actuated shutdown valve, and ABS design approval. *Dry weight: 15,500 lbs*



Diesel Day Tank Skid Package

Diesel day tank skid package consisting of a 3600 gallon carbon steel tank with two centrifugal pumps direct driven by an electric motor. Unit includes piping valves and instruments. *Dry weight: 15,600 lbs*

PRODUCTION EQUIPMENT



Automatic Well Test (AWT) Skids

AWT skids consisting of 12- and 6-header manifolds including piping, fittings, automated valves, instrumentation, and electrical junction box on common skids. This is one of 21 AWT skids manufactured at DXP's 529 facility. *Size: 26'L x 9'W x 9'H (12 header) | Dry Weight: 17,000 lbs (12 header)*

NGL PUMPING SYSTEMS



Modular Horizontal Pump NGL Pumping System

NGL pumping system with two PumpWorks HP Plus horizontal pumps operating in 2 x 100% configuration. This package includes all suction, discharge, mechanical seal flush, instrumentation and electrical components required to make it a turn-key system.



NGL Product Booster Pump

NGL product booster pump consisting of two vertical can pumps, driven by electric motors with control valves, piping, and instrumentation. *Dry weight: 27,872 lbs*

POTABLE WATER PACKAGES



Potable Water Pressure System—view 1



Potable Water Pressure System—view 2

Potable water pressure system consisting of two vertical ANSI centrifugal pumps direct driven by an electric motor. Unit includes a 1000 gallon supply tank, 264 gallon bladder tank, UV sterilizer, filters, piping, valves, fittings, instruments, and controls. *Dry weight: 11,314 lbs*

FIREWATER PUMP PACKAGES



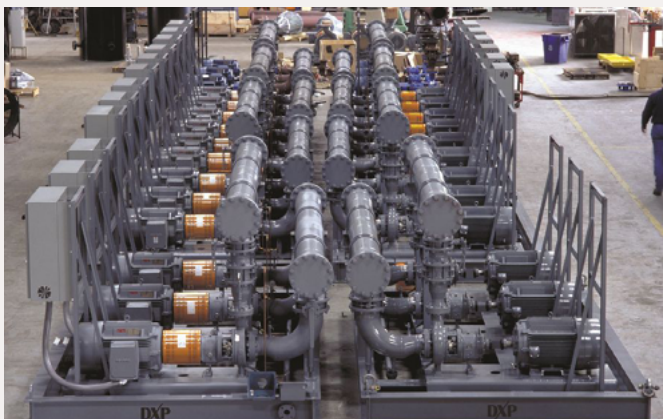
Firewater Pump Package—view 1



Firewater Pump Package—view 2

Firewater pump package consisting of a vertical lineshaft turbine, 10" column, 10" x 20" fabricated discharge head, right angle gear and driven by a diesel engine. Unit includes a 466 gallon built in fuel tank and is pneumatically started using a 500 gallon air receiver with control panel and nitrogen back-up start-up system. *Dry weight: 28,933 lbs*

COOLING WATER SKIDS



Cooling Water Skids

Cooling water skids each consisting of three centrifugal pumps driven by electric motors with AC inverters and associated piping, valves, and fittings on a common skid. *Dry weight: 11,680 lbs*



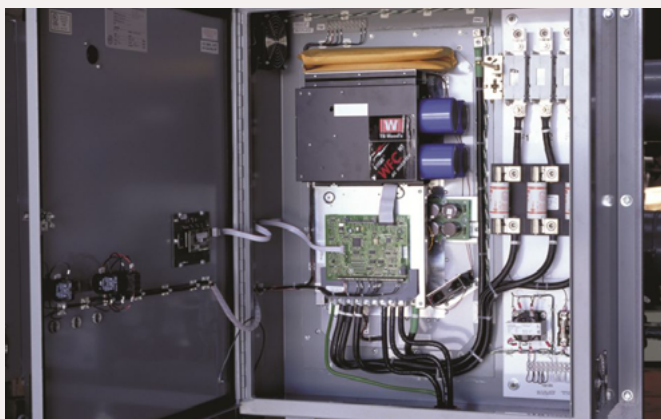
Oil Booster & Oil Transfer Pump Skids

Multi-pump package project for an onshore oilfield application. Each system included one electric motor driven PumpWorks PWA ANSI end suction centrifugal pump, suction and discharge piping, inlet strainer, control valve, flow meter and plan 52 seal flush system.



Electric Motors & Controls—view 1

We specialize in designing, constructing, and installing pump control systems, ranging from simple controllers to intricate electrical panels. Our solutions are tailored to your specifications adhering to UL standards. Whether it's a small or complex pump control requirement, we have the expertise to engineer and implement effective solutions.



Electric Motors & Controls—view 2

Our comprehensive automation services encompass Motor Controls, Variable Frequency Drives (VFDs), Operator Interface Terminals, Remote Monitoring, and Telemetry. From pre-engineered pump control panels to high-end solutions, we cover the entire spectrum of automation needs.

CHEMICAL INJECTION SYSTEMS



Chemical Injection Skids

Chemical injection skid consisting of twenty chemical metering pumps, high pressure tubing, fittings, valves, tanks, and control panel mounted on a common double-decker skid. *Dry weight: 77,520 lbs*



Chemical Injection Skids

Chemical injection skids—asphalt and corrosion inhibitor skid—consisting of four pumps with associated interconnecting piping, valves, instrumentation and filters. *Size: 12'W x 20'L x 7'H | Dry weight: 18,000 lbs*



Chemical Injection Skid Package

Chemical injection skid package consisting of electric motor driven API 675 metering pumps. Unit includes stainless steel piping, valves, and instruments. *Dry weight: 3,500 lbs*



Amine & Glycol Tank & Pump Skid

Amine and glycol tank and pump skid consisting of two air operated diaphragm pumps, with control valves, actuated valves, piping, and instruments. *Dry weight: 6,700 lbs*

MEASUREMENT



Cold Weather/Enclosed Metering Skid

Inside view of large pipeline metering skid enclosed in climate-controlled building. These units are deployed in cold weather areas with temperature ratings down to -40° F.



Pipeline Measurement Skid

One Million Barrel Per Day Pipeline Gathering System. This skid, consisting of four 12 inch meter runs and two header skids, was one of 5 custom-designed modular pipeline metering systems for ease of shipment, as well as the ability to add and subtract meter runs as the gathering station expands.



Standard Truck Loading Lact Unit

A Standard Truck Loading LACT to replace tank gauging and allow for accurate measurement at the point of custody transfer. Compact design with the truck interface all together for ease of use. DXP's standard design allows for inventory and quick shipment of this kind of units.



Y-Grade Pumping & Measurement Skid

Y-Grade Pumping and Measurement Skid – 50' Long x 11' Wide module including two 250 HP PumpWorks HP-Plus horizontal multistage centrifugal pump, each rated at 10,000 BPD @ 1200 PSI Discharge pressure, 3" Coriolis mass flow meter, piping, valves, instrumentation and controls. Skid designed to deliver NGLs through a pipeline and directly into a fractionation train. Autonomous operation with standby recycle regardless of fractionator liquid demand. Auto degassing systems for reliable re-starts.

COLD WEATHER PACKAGES



Cold Weather Produced Pipeline Pump Skid

Inside DXP's modular, enclosed, pumping packages using DXP's own HP Plus horizontal surface pumps. DXP is the only integrator that manufactures its own pumps under PumpWorks and HP Plus brands. Crude oil package designed for 20,000 BPD at 1480 psi discharge and includes twin overhead monorails for pump service.



Cold Weather Pipeline Pump Skid



Controls & Automation

On skid electrical systems including disconnects, power distributions, VFDs, starter panels and control panels built to customer specifications.



Enclosed Salt Water Disposal Systems

Complete Salt Water Injection system using two DXP HP Plus horizontal multistage surface pumps including booster pumps, filtration and metering.

AMMONIA HANDLING EQUIPMENT



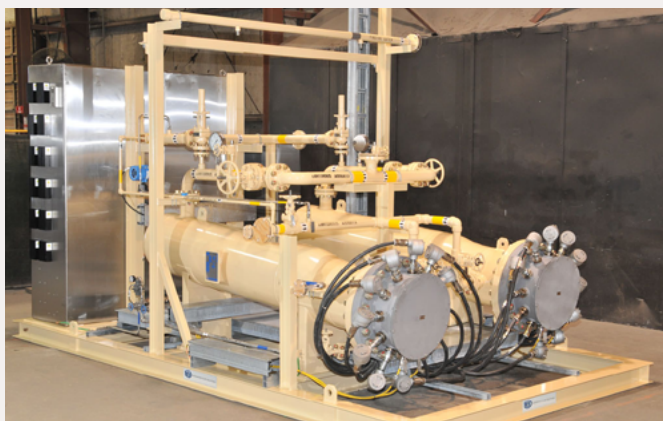
Ammonia Storage & Vaporizer System

Two anhydrous ammonia storage and vaporization systems consisting of carbon steel 6000-gallon storage tanks and 75 kW electric vaporizers with PLC control system (only one unit shown).



Anhydrous Ammonia Flow Control System

This anhydrous ammonia AFCU consists of two 1040 lb/hr 20 hp cold air blowers, one 100 kW electric dilution air heater, one vaporizer and controls.



Anhydrous Ammonia Vaporization System

This 2x100% anhydrous ammonia vaporization skid was part of a complete unloading, storage and vaporization system with one 200-gallon ammonia dilution truck, two 24,000-gallon ammonia storage and two 463 kW electric heater vaporizers and controls.



Aqueous Ammonia Flow Control

Aqueous ammonia flow control unit for 29% aqueous ammonia. Includes dilution with hot flue gas (600°F) using two 50 hp blowers, insulation and controls.

FUEL GAS CONDITIONING EQUIPMENT



Offshore Fuel Gas Conditioning System

Consisting of one horizontal fuel gas separator, two vertical fuel gas scrubbers, one fuel gas filter-coalescer, one gas-gas shell and tube heat exchanger, two 675 kW electric process heaters, two NEMA 4x interconnecting piping, valves and instrumentation.



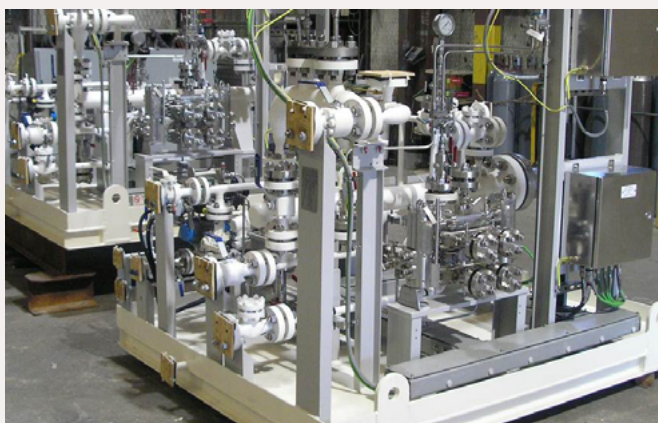
Hot Oil Fuel Gas Conditioning System

9000 BPD modular fuel gas/hot oil package unit consisting of fuel gas scrubber, duplex filter separators with 18 kW outlet heater and associated pipe, valves and controls.



Power Plant Fuel Gas Conditioning System

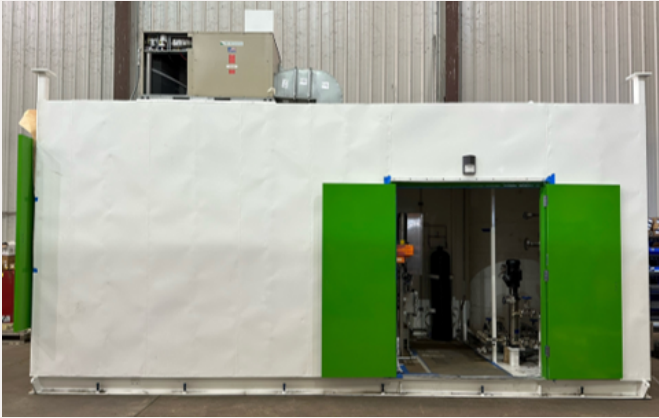
Complete system consisting of inlet multi-cyclone scrubber, drains tank and two performance heat exchangers designed to raise gas temperature from 61° to 141° F.



Seal Gas Conditioning Skids

Two seal gas conditioning kids each for one turbine driven compressor train. Units designed to provide 192 SCFM of seal gas each.

RENEWABLE ENERGY PRODUCTION EQUIPMENT



Hydrogen Production Modules

Gray hydrogen production plant auxiliary system. This modular custom built, enclosed system consists of two partitions: one water treatment unit and one power controls room with plc, switch gear and fire suppression system.



Green Hydrogen Production Modules

One modularized, one megawatt green hydrogen production module. System is containerized and includes power management, controls, rectifier, water treatment and pumping, oxygen and hydrogen separators and electrolyzer stack.

ELECTRIC PROCESS HEATERS



Crude Oil Heating

One heavy crude oil viscosity reduction unit consisting of three 700 kW Integraheat electric process heaters, three NEMA 4x heater power panels, PLC panel and all interconnecting piping, valves and instrumentation.



Hot Water Heater Package

One hot water offshore platform system consisting of two distribution pumps, two recirculation pumps, 120 kW electric process heaters, one PLC control panel and all interconnecting piping, valves and instrumentation.



For all your fluid handling, measurement and process needs, please contact your local DXP sales professional or email 529sales@dxpe.com today.