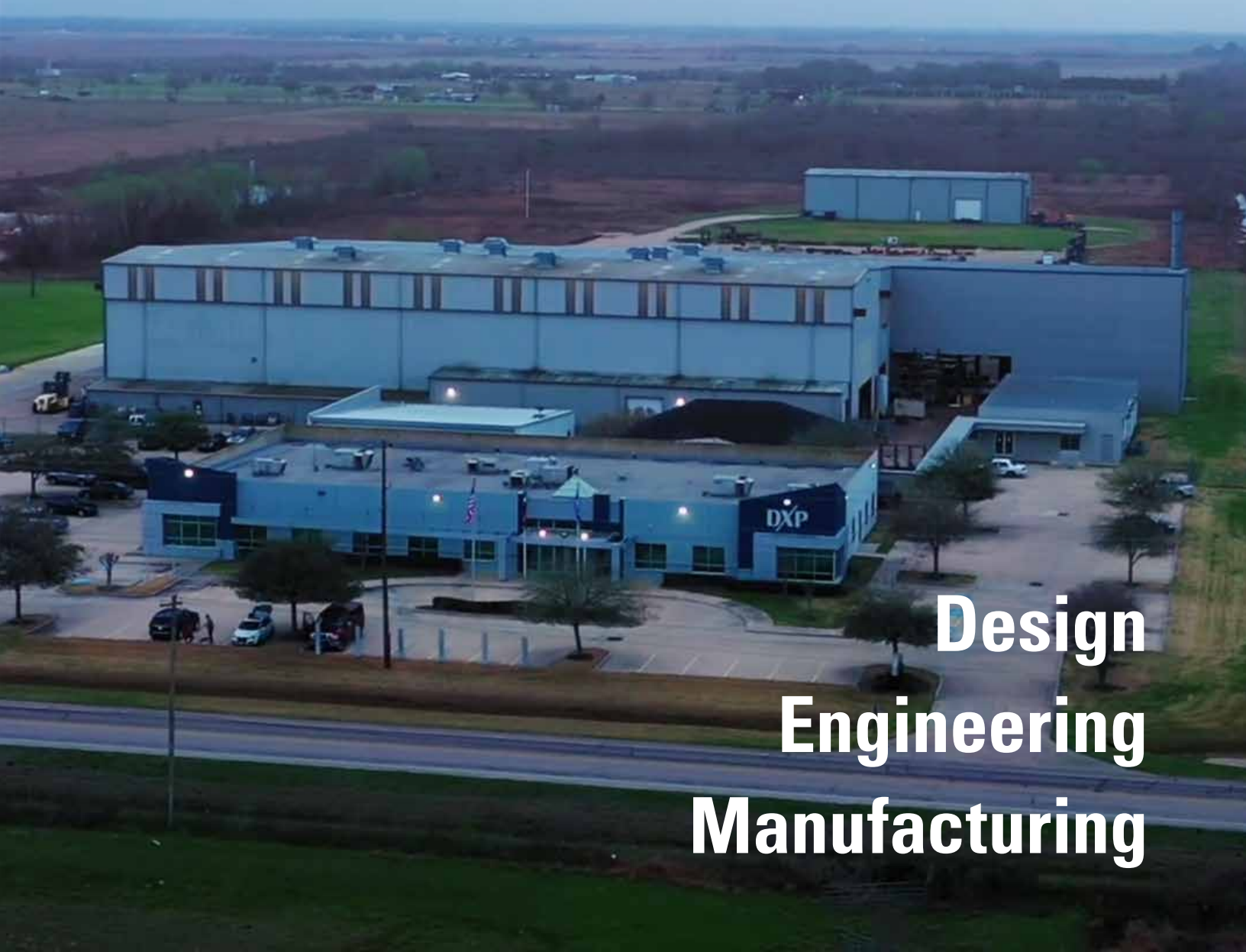




INNOVATIVE PUMPING SOLUTIONS

CAPABILITIES



**Design
Engineering
Manufacturing**

PROJECT MANAGEMENT

Each Project Management Group consists of a dedicated Project Manager, Project Engineer and Design Team to manage each project from start to finish. The Project Manager is the single point contact with the customer.



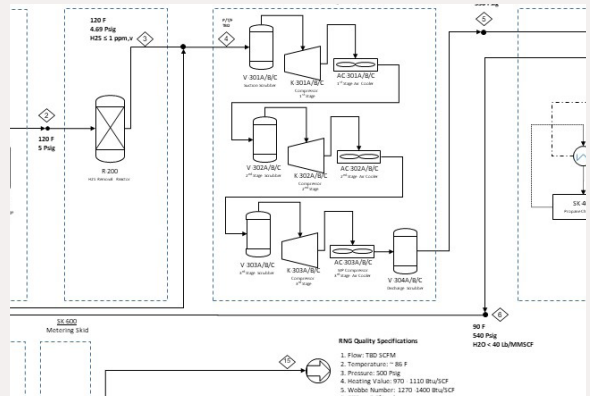
ENGINEERING & DESIGN

DXP uses the latest SOLIDWORKS software to generate models of each package. These models minimize equipment interferences and maximize safety.



PROCESS SIMULATION

DXP utilizes Aspen Plus Process Simulation Software for conceptual design, optimization, and performance modeling of DXP's proposed solutions to customer requirements.



AUTOMATION

DXP knows that the proper integration of automation and controls with packaged mechanical equipment is important. DXP's Automation & Controls team understands the process requirements to design and supply the best controls for the job. From the simplest functions to PLC's incorporating control functions outside DXP supplied packaged equipment, automation is a large part of DXP's added value.



AFTERMARKET/SERVICE – PARTS SUPPORT

Our dedicated Aftermarket Group provides onsite, factory training commissioning start support as well as operator training. Our parts department offers spare and replacement parts throughout the service life of our equipment and our service center locations offer local MRO support throughout North America.



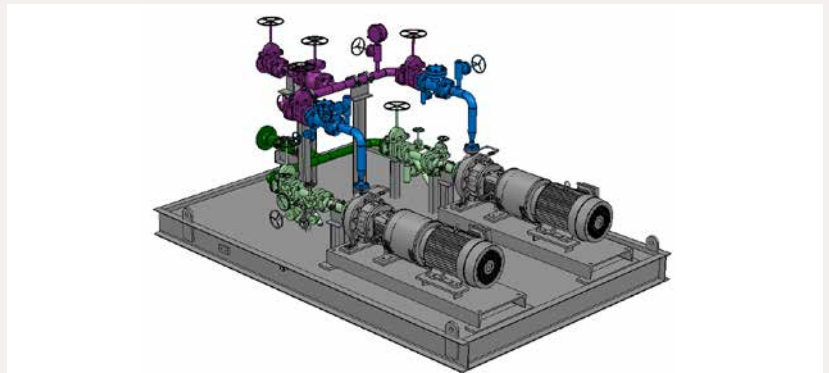
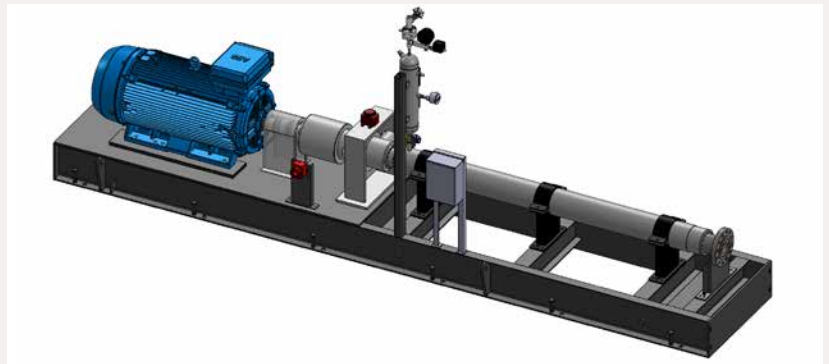
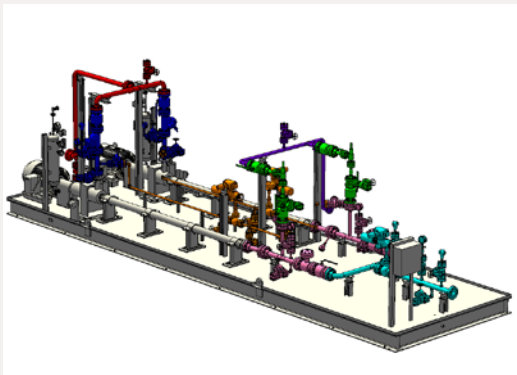
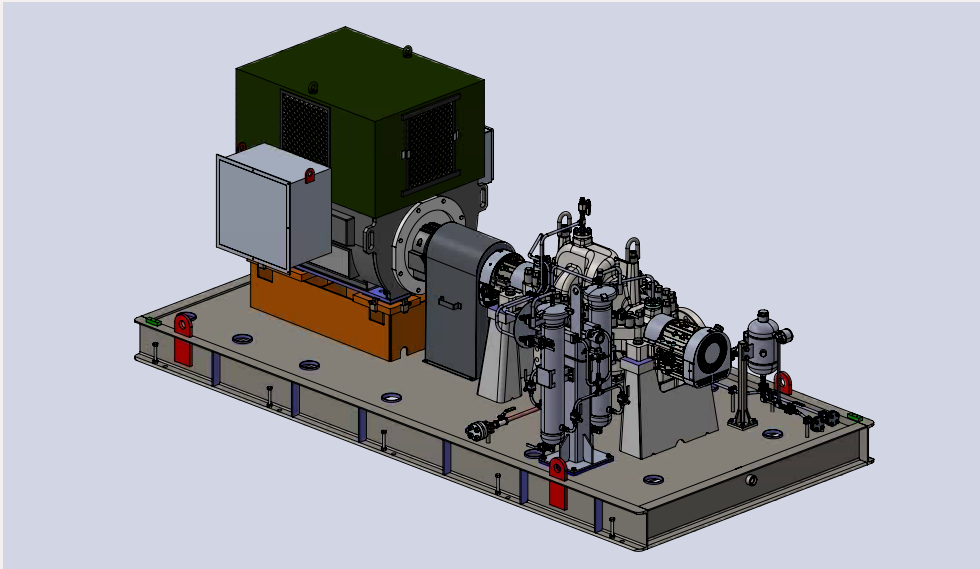
QUALITY CONTROL/ QUALITY ASSURANCE

Our IPS Design & Manufacturing facility completed ISO 9001:2015 certification by DAS in 2020.



ENGINEERING & DESIGN

DXP Innovative Pumping Solutions utilizes the most up-to-date technology to meet the demands of its global customer base. Using 3D mechanical design software, DXP provides a complete design solution with verification to meet the customer needs.



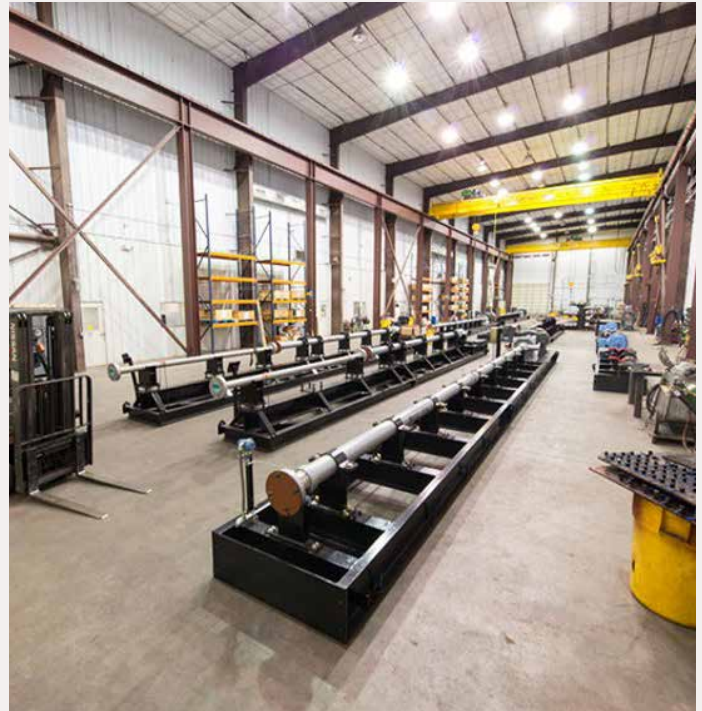
DXP FABRICATION FACILITY – KATY, TX



Bay 1: Structure and Pipe Welding



Bay 3: Large Module Fabrication



Bay 4: HP Plus Pump Assembly and Testing



Climate Controlled Warehouse

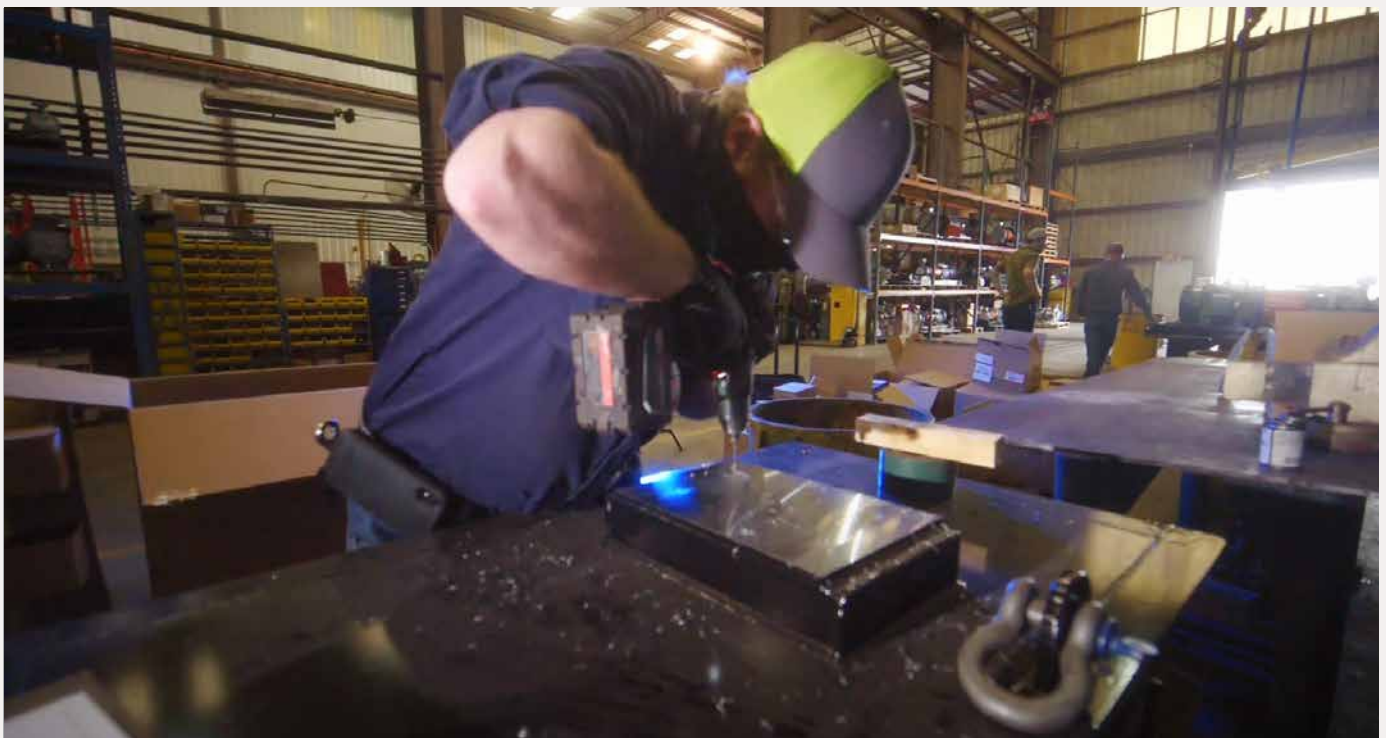
DXP FABRICATION FACILITY – KATY, TX



Indoor Paint and Sandblast Booth



Welding and Fabrication



Bay 2 – Light Pump Assembly and Repair

SERVICE & SUPPORT

Comprehensive footprint providing access and coverage for key markets.

156

Service
Centers

16

Fabrication
Centers

6

Manufacturing &
Remanufacturing

4

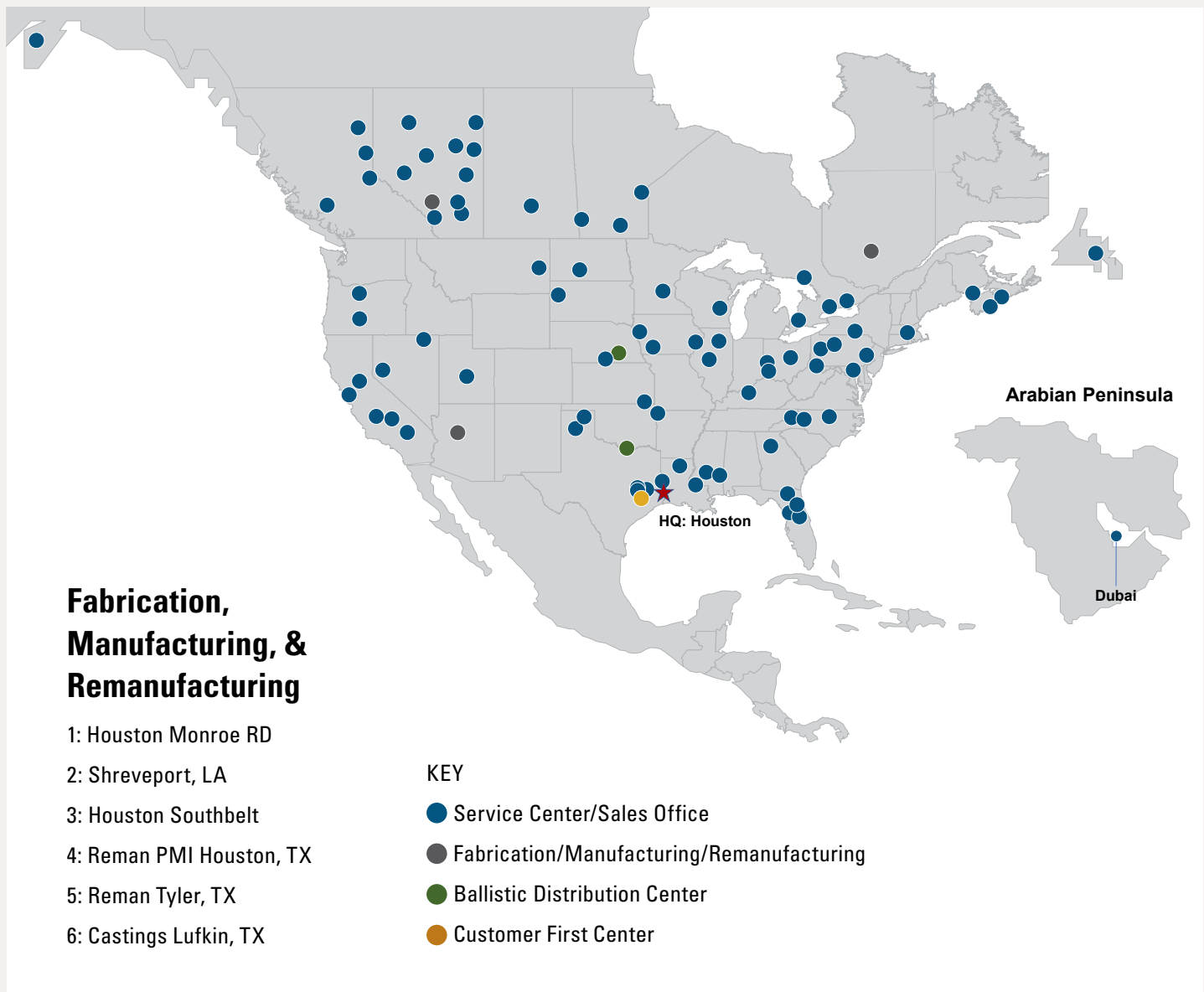
Wastewater
Locations

4

Ballistic
Distribution
Centers

1

Customer
First
Centers



529 FABRICATION CENTER – KATY, TX

Contact Information

Main Phone Number: 713-996-6300

Main Fax Number: 713-937-7848

Address: 28377 FM 529, Katy, TX 77493

Sales Contact: Juan Carlos Patino, juan.patino@dxpe.com

Quote Contact: Don Purser, don.purser@dxpe.com

Production Contact: John Perry, john.perry@dxpe.com

Service Contact: John Henneke, john.henneke@dxpe.com

Personnel

Sales Department: 8

Application Engineers: 17

Project Management/Engineering: 18

Draftsmen/Designers: 5

Documentation: 2

FAB Coordinators: 5

Shipping & Receiving: 6

Shop & Service Management: 4

Assembly: 11

Welding: 17

Management & Administration Department: 8

Service Technicians: 6

Service Coordinators: 3

QA: 2

Facility

Total Square Footage: 110,000

Production Square Footage: 68,000

Office Square Footage: 24,000

Warehouse Square Footage: 18,200 (9,200 Climate Controlled)

Yard Area: 1.3 Acres 12" Concrete pad; 2.1 Acres Stabilized

Bridge Cranes: (1) 40-T; (1) 30-T; (4) 20-T; (1) 15-T; (1) 20-T

Size Limitation (l x w x h): 80' l x 23' w x 26' h (Inside)

Services

Application Engineering

Certified Structural Welding

Autocad & Solidworks Drafting

Certified Pipe Welding

Project Engineering

Skid Assembly

Project Management

Custom Coating

System Troubleshooting

Testing—NDE, Mechanical String, Hydrostatic

Equipment

Miller CP302: 16

Miller Pipeworkx 400: 9

Miller Dynasty 350: 2

Miller Dimension 650: 2

Lincoln DC600 SUB-Arc: 1

Plasma Cutter: 1

Bead blaster: 1

50-Ton hydraulic Press: 1

Niton XL2 980 PMI Machine: 1

Steel Grit Shot Blast Booth 18' x 18' x 50': 1

Paint Spray Booth 18' x 18' x 50': 1

Edwards 60-Ton Iron Worker: 1

GCTR TI-10000 Hydrotest Pump: 1

500 HP Pump Test Stand: 1

Service Trucks *F450) with Autocrane: 5

Rotary Table Pressure Washer: 1

Schenk CAB820 Balance Machine: 1

1-TJIB Cranes: 6