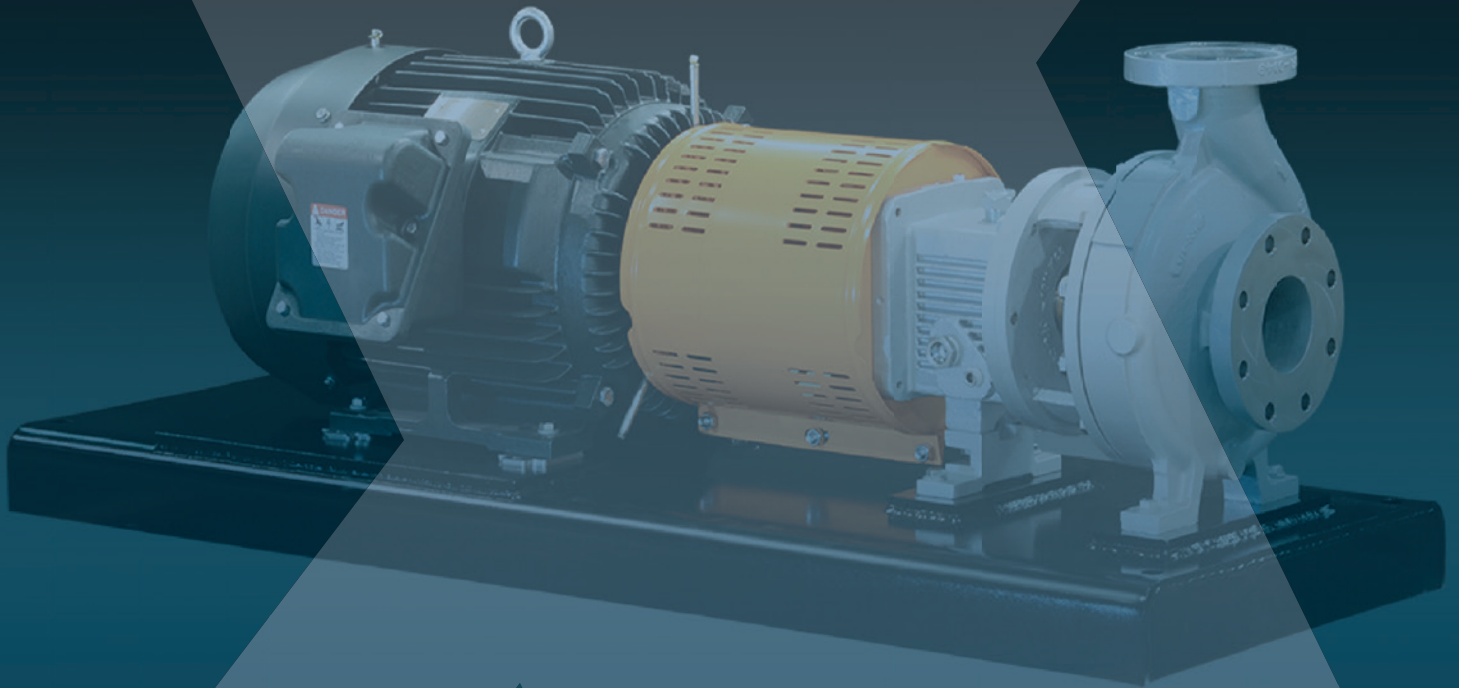


# DXP



## ROTATING DIVISION LINESHEET

800.830.DXPE | [www.dxpe.com](http://www.dxpe.com)



# THE POWER OF DXPeople

D-X- people /D X 'pēpəl/- (noun)

*A particular group of individuals collectively serving their customers in the best way they can while working together as one team.*

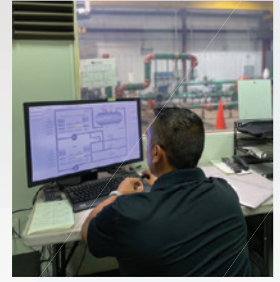
---

Our people are the heart of our organization. DXPeople are dedicated, loyal and thrive on the act of serving customers. We are a close-knit family, and we care for our customers, suppliers and partners with the same hospitality. The values of our DXPeople shine through in each interaction in the field. We are driven by problem solving for the customer and providing the Xpertise and service you rely upon.

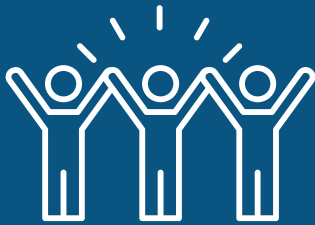


## OUR COMPANY

For more than 100 years, DXP Enterprises has served as a leading industrial distribution expert in the industry. Product specialties include rotating equipment, bearings and power transmission, metalworking, industrial supplies and more. Our company continues to stay on the leading edge of technology, training, and products while attracting and retaining the best employees. From aviation and agriculture to fabrication and construction, we offer dedicated service and support for a variety of industries.



## OUR FOCUS



At DXP, our corporate strategy is simply to be the best solution for our industrial customers. Our team is comprised of customer-driven experts in a variety of specialties, including supply chain services, pump manufacturing, and renewable energy solutions. In the best interest of our clients and partners, we maintain compliance of all statutory and regulatory requirements. DXP is committed to providing quality products and services that exceed our customer's expectations.

## OUR COMMITMENT

At the center of our approach to corporate responsibility, DXP is committed to delivering transparency, both in our own operations and on behalf of our customers. We firmly believe that the power of active decision-making is the best way to achieve consistent and reliable sustainability. Our robust Environmental, Social, and Governance (ESG) Strategy will allow us to drive improvements wherever and whenever possible, all while serving our clients and protecting the environment. As we actively work internally and externally to meet ESG reporting standards, we encourage you to do the same.





# CENTRIFUGAL PUMPS



## Horizontal Industrial Centrifugal

Allweiler • Cornell • Crane Pumps (Barnes, Burks, Crown Pumps, Deming, Weinman) •

Dean Pumps • Flowserve • Fybroc • Gorman Rupp • Grundfos (Grundfos/Peerless/Paco) • Gusher • Hayward Gordon • Iwaki • KSB • Magnatex • MP • O'Drill/MCM • Pentair Group (Fairbanks Nijhuis/Aurora) • PumpWorks • Scot • Sero • Sulzer • Sunstrand (Sundyne/Sunflo) • Trillium (Floway, Roto-Jet, Wemco, WSP) • Vanton • Vertiflo • Xylem, Goulds Water Technologies



## API 610

PumpWorks • Sundyne



## Vertical Turbine Pumps

Cascade • Floway • Franklin Electric • Peerles • National • Pentair Group (Fairbanks Nijhuis Aurora) • PumpWorks • Simflo • Xylem, Goulds Water Technology



## Fire Pump Packages

AC Fire • Peerles



## Horizontal Pumping System

Baker Hughes • PumpWorks HP-Plus



## Sealless Pumps

Ansimag • HMD Kontro • Innomag • Isochem • Iwaki • Liquiflo • Little Giant • Magnatex March • MTH • PumpWorks • Sundyne • Richter



## Self-Priming Pumps

Barnes • Crown • Godwin • Gorman Rupp • Gusher • MP • Pioneer • Price • PumpWorks • Trillium WSP • Xylem, Goulds Water Technology



## Food & Beverage/Pharma

Alfa-Laval • Ampco • CIRCOR • Graco • Murzan • Netzsch • Q-Pumps • Seepex • SPX Flow (APV, Waukesha Cherry-Burrell)



## General Service

Armstrong • Berkeley • Ebara • Flojet • Franklin Electric • Grindex • Grundfos • Hydromatic • Jabsco • KSB • MP • Price • Scot • Tonkaflo • Xylem, Goulds Water Technologies

# SUBMERSIBLE PUMPS



## Grinder

ABS • Ebara • Flygt • Vaughan • Xylem, Goulds Water Technology



## Heavy Duty Abrasive

BJM • Flygt • Grindex • KSB • Polaris • Vulcan



## Sewage & Wastewater

ABS • Barnes • BJM • Ebara • Flygt • Gorman Rupp • Hydromatic • Keen Pumps • KSB • Xylem, Goulds Water Technology



## Dewatering

Barnes • BJM • Ebara • Flygt • Gorman Rupp • Grindex • KSB • Xylem, Goulds Water Technology



## General Service

Barnes • Ebara • Grindex • Hydromatic • KSB • Xylem, Goulds Water Technology • Zoeller

## SPECIALTY PUMPS



### Hydraulically Balanced Diaphragm

Wanner Hydra-Cell



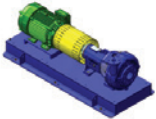
### Regenerative Turbine

Aurora • Burks • MTH



### Diaphragm Process Pump Manufacturers

Bran+Luebbe



### Disc Pump

Discflo



### Eccentric Disc

Mouvex



### Drum Pumps

Lutz • Finish Thompson



### Peristaltic Pump

Abaque • LSM • Netzsch • Vector • Watson MarlowAPV



### High Pressure Pitot Tube

Roto-Jet



### Drum Unloaders

Graco



### Homogenizers

APV

## AIR COMPRESSORS



### All Air Compressors Manufacturers

Atlas Copco • Blackmer • Champion • Corken • F.S. Elliot • Gardner Denver • Ingersoll Rand • Kaeser

## ELECTRIC MOTORS



### All Electric Motors

ABB Baldor • G.E. • Marathon • Nidec • TECO-Westinghouse • Toshiba • WEG

## POSITIVE DISPLACEMENT PUMPS



### Rotary Gear

Blacker G-Series • Bowie • Corken • Oberdorfer • Roper • Viking



### Vane

Blackmer • Corken • Viking



### Screw

Gusher • Houttuin • IMO • Netzsch • Q-Pumps • Warren • Waukesha Cherry-Burrell



### Lobe

Alfa Laval • APV • Boerger • Netzsch • Q-Pumps • Swaby • Viking Hygienic • Vogelsang • Waukesha Cherry-Burrell



### Progressive Cavity

Continental • Liberty • Moyno • Netzsch • PCM • PumpWorks • Seepex



## Plunger/Piston

CatPumps • FMC • Kerr Pump • Myers Aplex  
• NOV • Weatherford



## Air Operated Double Diaphragm

Almatec • ARO • Graco • Iwaki • Murzan •  
Warren Rupp Versamatic • Warren Rupp •  
Wilden • Yamada •



## Sealless

Blackmer E-Series • Hydra-Cell • Isochem •  
Liquiflo • Micropump • Mouvox • Viking

## METERING PUMPS



## All Metering

Bran+Luebbe • LMI • Milton Roy • Neptune •  
ProMinent • Pulsafeeder • Pulsatron •

## VACUUM PUMPS & BLOWERS



## Dry Vacuum, Multistage Roots Type

Unozawa



## Liquid Ring Pumps & Compressors

Airtech (Speck) • Dekker Vacuum • NES  
Company • Premier • Travaini



## Oil Sealed Lubricated Vane

Airtech • DVP • Edwards Vacuum • Travaini



## Truck Pumps, Rotary Vane

Fruitland • Cowboy • Masport • MoroUSA  
• NVE



## Piston Pumps

Edwards Vacuum (Stokes) • MD Kineey



## Dry Claw

Airtech • Becker • DVP



## Dry Vane

Airtech • Becker • DVP



## Lobe Style Blowers

Eurus • I-R Hibon • Unozawa



## Multistage Centrifugal Blowers

I-R Hibon • National Turbine



## Regenerative Blowers

Airtech • DVP

**Aftermarket Parts:** Precision Plus Vacuum Parts

## MECHANICAL SEALS & PACKING



## Mechanical Seals

AES • AST • Eagle Burgmann • Flex-A-Seal  
• Flowserve • John Crane • Utex



## Packing

Braiding Rainsflo • Garlock • New England  
• SEPCO



## Fluid Filtration

Eaton Filtration • Hayward Strainers •  
Viking

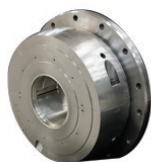
## SERVICE/REPAIR/ REMANUFACTURING



### Pump Service & Repair Centers

65+ Repair Shops Across North America • 24 Hour Service/365 Days a Year • All Makes and Models, Big

and Small • High Specification Experience • Trained Expert Mechanics and Machinists • Experienced Field Service Technicians • Engineering and Applications Support • Preventative and Predictive Maintenance • Maintenance and Service Agreements (MSAs) • Expert Root Cause Failure Analysis



### Babbitt Bearing Repair

Large steam and gas turbine and generator journal and thrust bearings • Hydroelectric turbine guide and thrust bearings • Fan bearings, including very large boiler draft fans

• Pump bearings, including large cooling water pumps • Motor bearings • Thrust bearings, including tapered land and tilt pad • Ball mill bearings • Pillow block bearings for industrial process machines • Hydrogen seals for gas filled generators • Babbitted oil seals • Toothed oil deflectors • Floating and fixed oil rings



### Field Service

DXP's team of pump field service experts have experience with all major OEM brands. We know that a pump is critical to the

operation of your facility, and it is a major investment. Let us service your pump when the need arises.



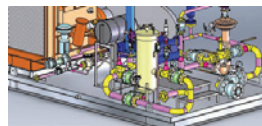
### Remanufactured Pumps

PumpWorks Remanufactured Pumps • Power Machinery Inc., Houston, TX



### Upgrades

PumpWorks Power End Upgrade Program



### Rerates

DXP's engineers and pump experts can evaluate, redesign and rerate your pump to address a change in operating range, efficiency or reliability.

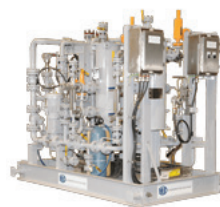
## ENGINEERED FABRICATION



### LACT

Lease Automatic Custody Transfer skids for accurate midstream measurement of crude oil and petroleum products. We supply

several LACT units for truck loading/unloading, pipeline gathering, multi-well measurement, and a tankless unit that integrated with separators and 2-20 wells. Our LACT units are sure to meet your fabricated measurement needs.



### IFS Engineered Pump Solutions

Industrial pump packages from pump selection to installation. Our capabilities cover pumps for use in firewater, chemical injection, saltwater injection, potable water,

oil pipeline, cooling water, LACT, amine, produced water systems, and more. Our 100 years of fabrication experience enables us to offer the highest quality products alongside 24/7 year-round service, factory trained technical help, field service, root cause failure analysis, safety programs, etc.

# PROCESS CONTROLS & AUTOMATION

DXP is your trusted expert to provide the mechanical equipment to carry out your processes. We know how the equipment should be run to optimize the life-cycle of the parts and can engineer the automation and controls to better support the equipment and maximize your processes.

## Advanced Control Systems

Our advanced control systems provide you with the capability to monitor and control multiple processes from a single interface.

## Automation

Automation of process controls reduces the risk of human error and improves safety.

## Training & Support

Our expert staff can provide you with the skills and knowledge you need to operate your automation system with confidence.



### Predict-Plus

Predict-Plus is the only wireless and cloud connected machinery health monitor designed specifically for proactive pump monitoring.

**ALWAYS ON:** Predict-Plus is CONTINUOUSLY monitoring and logging your pump's health.

**CLASS 1, DIVISION 1:** Predict-Plus is intrinsically safe

**VIBRATION:** Overall RMS vibration alerts can be used to indicate a fault condition and FFT harmonic data can be used to diagnose the issue.

**BEARING TEMPERATURE:** Temperature is monitored via the integrated thermocouple to detect improper run conditions and failure modes.

**ALERTS:** Proactive Alerts send automatically via email and SMS from the Predict-Cloud.





**THE INDUSTRIAL DISTRIBUTION EXPERTS**

5301 Hollister Street | Houston, TX 77040

**800.830.DXPE | [www.dxpe.com](http://www.dxpe.com)**