

DXP

INNOVATIVE
PUMPING
SOLUTIONS®





FABRICATION CENTER - HOUSTON, TX

Contact Information	
Main Phone Number	713.996.6300
Main Fax Number	713.937.7848
Address	28377FreemanRd. Katy, TX 77493
Sales Contact	Tom Atkinson
Quote Contact	Don Purser
Production Contact	John Perry
Service Contact	John Henneke
Services	
Application Engineering	Certified Structural Welding
AutoCAD & SolidWorks Drafting	Certified Pipe Welding
Project Engineering	Skid Assembly
Project Management	Custom Coating
System Troubleshooting	Testing --NDE, Mechanical String Hydrostatic
Facilities	
Total Square Footage	80,000
Production Square Footage	64,000
Office Square Footage	16,000
Yard Area	None
Lifting Capabilities	(4) 20 ton, (2) 15 ton & (1) 10 ton Bridge
Size Limitations (LxWxH)	75'x23'x20'
Equipment	
(11) 300A Miller MIG Welding Machines	(8) 1-ton Jib Cranes
(2) AFTEK Pulse Welding Machines	(5) Service Trucks (3-F350's; 2-F450's)
Paint Booth (20'W x 7'D x 10'H)	(1) Fosdick Radial Arm Drill
Bead Blaster	(2) Bandsaws
50-ton Hydraulic Press	(1) Rotary Table Pressure Washer
Plasma Cutter	



BUILDING A

DXP Fabrication Facility - Houston, TX



BUILDING B

Firewater Pump Packages Firewater Pump Packages Firewater Pump P



Firewater pump package consisting of two Goulds horizontal split case pumps, 3408 8x10-20L and 3409 8x12-20L with Caterpillar 3406 engines. Included on the same skid was a Goulds 3410 2x3-11, 60HP wash down pump and a G&L SSV jockey pump. Complete package with piping and controls per NFPA 20.

Dry weight: 38,000 lbs.



Firewater pump skid consisting of 20" x 10" discharge head, Amarillo right angle gear, and driven by a Caterpillar 3406DITA diesel engine. Package includes built in fuel tank with pneumatic control panel. Unit in accordance with NFPA 20.

Dry weight: 11,892 lbs.

ackages Firewater Pump Packages Firewater Pump Packages Firewater



Two firewater pump packages – each package consists of a Goulds 18DMC 4-stage vertical turbine pump, Caterpillar 3412DITA diesel engine, Amarillo S750A right angle gear, and 12" fabricated discharge head.
Dry weight: 15,748 lbs. each.



Firewater Pump Package consisting of 2 AC Model 8100 10x8-17F-S horizontal split case pumps, one driven by a 125 HP electric motor with panel, and one driven by a Clarke Model JU6H diesel engine with controller. The package includes an AC 3125 jockey pump and controller; double-walled fuel tank, flow meter, piping, and valves per NFPA 20. Complete package was shipped inside a prefabricated environmental enclosure.
Size: 25'L X 12' W X 10'H
Dry weight: 30,000 lbs.

Firewater Pump Packages Firewater Pump Packages Firewater Pump P



Firewater pump package consisting of a Goulds 3 stage 20EHC vertical lineshaft turbine, 14" NiAlBrz column pipe, 14" x 24½" fabricated discharge head, Amarillo S750A right angle gear, and driven by a Caterpillar 3412DITA diesel engine. Unit includes a 794 gallon built in fuel tank, and is electric start with controls, wiring, and auxiliary junction box suitable for a hazardous environment. Dry weight: 22,640 lbs.



Firewater Pump Packages Firewater Pump Packages Firewater Pump Packages Firewater



Firewater pump package consisting of a Goulds 4 stage 16 RDMD vertical lineshaft turbine, 10" column, 10"x20" fabricated discharge head, Randolph G400 right angle gear, and driven by a Caterpillar 3406 DITA diesel engine. Unit includes a 466 gallon built in fuel tank and is pneumatically started using a 500 gallon air receiver with control panel and nitrogen back-up system.
Dry weight: 28,933 lbs.



Chemical Injection Pump Skids Chemical Injection Pump Skids Chemical



Chemical injection skids - asphalt and corrosion inhibitor skid – 12'Wx20'Lx7'H, 18,000 lbs – 4 Goulds 3196MTX SS pumps with associated interconnecting 316L SS piping, valves, instrumentation and filters. Methanol and LDHI skid – 12'Wx20'Lx7'H, 18,000 lbs – 4 Goulds 3196MTX SS pumps with associated 316L SS interconnecting piping, valves, instrumentation and filters. Scale inhibitor transfer and sodium nitrate skid – 7'Wx20'Lx7'H, 11,000 lbs – 2 Goulds 3196MTX SS pumps and 2 Bran + Luebbe chemical injection pumps with associated interconnecting 316L piping, valves, instrumentation and filters.



Chemical injection skid consisting of (12) metering pumps electric motor driven, (8) 550 gallon tote tanks, calibration columns, piping, and valves, all 316SS wetted construction mounted on a common skid.

Chemical Injection Pump Skids Chemical Injection Pump Skids Chemical Injec



Chemical injection skid consisting of twenty Brans + Luebbe chemical metering pumps, Autoclave high pressure tubing (Hastelloy C and 316L SS), fittings and valves, 316SS tanks, and control panel mounted on a common double-decker skid.

Dry weight: 77,520 lbs.



Chemical injection skid package consisting of (1) Milton Roy MCH161 driven by a Baldor 3HP, TEFC motor, and (2) Milton Roy RT11 pumps driven by Baldor $\frac{1}{2}$ HP, TEFC motors. Unit includes stainless steel piping, valves, and instruments.

Dry weight: 3,500 lbs.

Saltwater Injection Pump Skids Saltwater Injection Pump Saltwater



Saltwater injection skids, each consisting of a Wheatley HP 600AM quintuplex plunger pump driven by a Caterpillar G3408 SITA natural gas engine through Falk 405A2-C-7 gear box with associated pipe, valves, fittings and control panels. Each unit includes a Pleuger PN 101-2 316SS submersible charge pump with Bondstrand column pipe.

Potable Water Packages Potable Water Packages Potable Water Packag



Potable water/pressure set, consisting of three Goulds 3196 ANSI centrifugal pumps. Driven by 20 HP electric motors with associated 316SS valves and filters, Ameron Bondsrand fiberglass piping, and hydro-pneumatic bladder tank on a two-tier skid. Dry weight: 35,000 lbs.

Potable Water Packages Potable Water Packages Potable Water Packag



Potable water pressure system consisting of (2) Goulds 3996ST, 1½ x 2 - 8 vertical ANSI centrifugal pump, direct driven by a Reliance 10HP electric motor. Unit includes a 1000 gallon supply tank, 264 gallon bladder tank, Wedco UV sterilizer, filters, piping, valves, fittings, instruments, and controls.

Dry weight: 11,314lbs.



es Potable Water Packages Potable Water Packages Potable Water Pack



Potable water/washdown pressure set package consists of two Goulds 3996 MT 3x4-10 pumps driven by 30 HP electric motors with bladder tank, filters, chlorine injection tank, and UV sterilizer. Washdown package mounted on the same skid includes Kerr KJ-2550 with 7.5 HP electric motor.

Dry weight: 26,740 lbs.



Potable water skid consisting of (2) Goulds 3196MTX 1x2-10 direct driven by Reliance 15HP, 3600 RPM electric motors, with a 422 gallon bladder tank, Cuno charcoal and cartridge filters, and Aquafine UV filter. Package is ABS Approved.

Dry weight: 14,750 lbs.

Potable Water Packages Potable Water Packages Potable Water Pack



Potable and utility water package, consisting of four Goulds 3996 ANSI vertical centrifugal pumps, driven by 20 HP electric motors with associated 316SS valves and piping, instrumentation, and two 9,240 gallon tanks.

Size: 30'L X 13' W X 19.5'H

Dry weight: 57,000 lbs.

Oil Pipeline Skids Oil Pipelins Skids Oil Pipeline Skids Oil Pipeline Ski

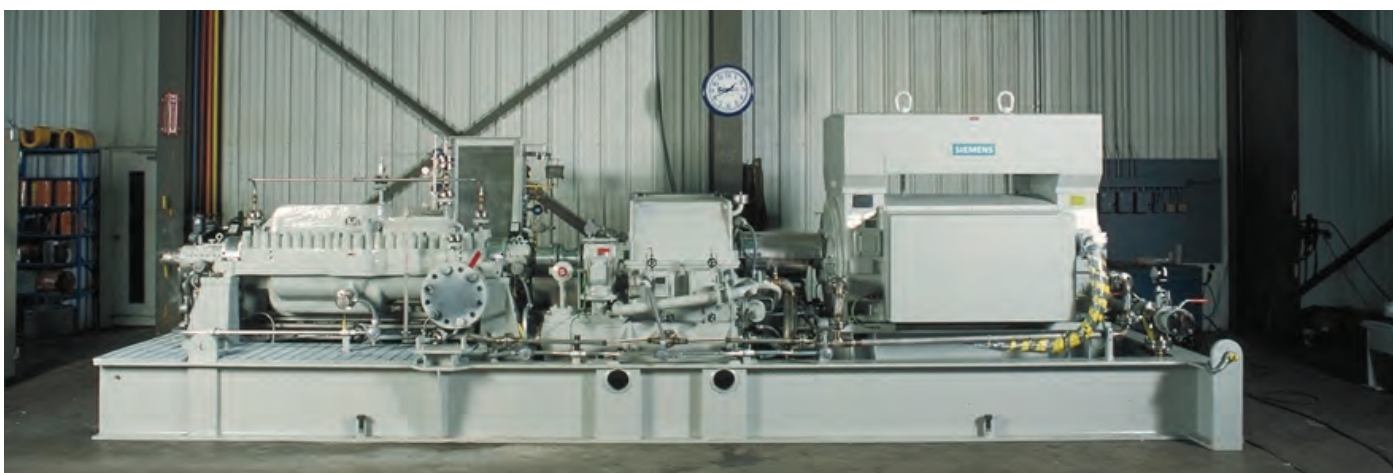


Three oil export pump skids, each consisting of a Sulzer model CPC 8x10-14.5, 12-stage horizontal multistage barrel pump driven by a 4,300 HP Electric Motor through a Voith 620 SVN 33 G.2 variable speed hydraulic coupling.

Dry weight: 80,630 lbs. each.

Two water flood Injection pump packages consisting of a Sulzer 8x8-14A API 610 barrel pump direct driven by a 3000 HP, 3600 RPM electric motor; unit includes a lube oil console mounted behind motor.

Dry weight: 62,778 lbs.



Oil pipeline skids, each consisting of an Ingersoll Rand 6x11 DAH-10 stage horizontal multistage pump driven by a 2500 HP electric motor through a Voith V.S.D.

Dry weight: 41,960 lbs.

Oil Pipeline Skids Oil Pipeline Skids Oil Pipeline Skids Oil Pipeline Ski



Three oil pipeline skids, each consisting of a Goulds model 3600 3x6-10, 14 stage horizontal multistage pump driven by a 400 HP electric motor and mounted on a 3-point suspension baseplate designed for a future 800 HP electric motor.

Dry weight: 21,000 lbs. each.



Oil pipeline pump skid consisting of three Gaso model 3968 triplex plunger pumps driven by 125 HP electric motors with associated pipe, valves, fittings and control panel on a common skid.

Dry weight: 37,440 lbs.

Oil Pipeline Skids Oil Pipeline Skids Oil Pipeline Skids Oil Pipeline Skids Oil Pipeline



Oil pipeline skid consisting of two Sulzer Bingham model MSD 4x6x10E horizontal multistage pumps driven by 900 electric motors and associated pipe, valves & fitting on a common skid.

Dry weight: 72,000 lbs.

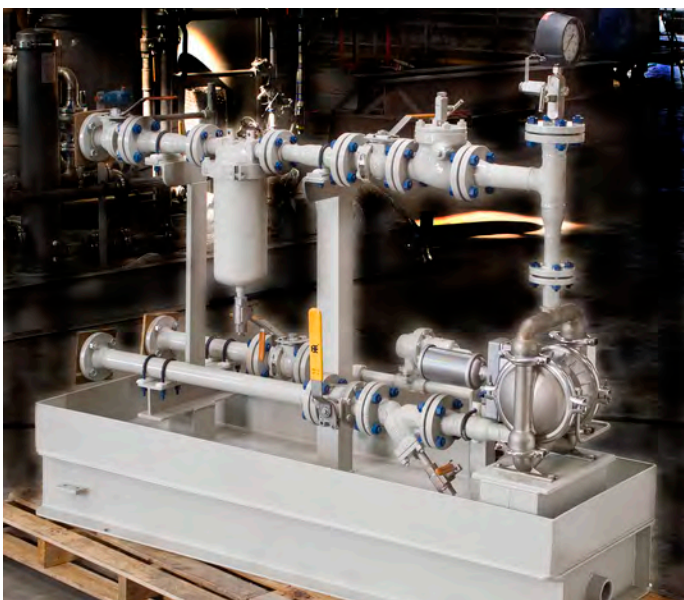


Light oil export pumps: Each unit consisting of a Sulzer 4 x 6 - 10.5, 12-stage, API multi-stage pump, directed by a Reliance 1750 HP, 3600 RPM, 3 phase, 60 cycle, 4000 volt, TEAAC electric motor.

Diesel Packages Diesel Packages Diesel Packages Diesel Packages



Diesel day tank skid package consisting of a 3600 gallon carbon steel tank with (2) Goulds LF3196 STX, 1x1½ - 8, 316SS centrifugal pump direct driven by a G.E. 3HP, IEEE, 841, electric motor. Unit includes piping valves and instruments.
Dry Weight: 15,600lbs.



Diesel transfer package consisting of a stainless steel Wilden PV4 air operated diaphragm pump with piping, valves, and filter for suction and discharge lines. Mounted on a common skid with 6" curbing.
Dry Weight: 725lbs.

Cooling Water Skids Cooling Water Skids Cooling Water Skid Cooling W



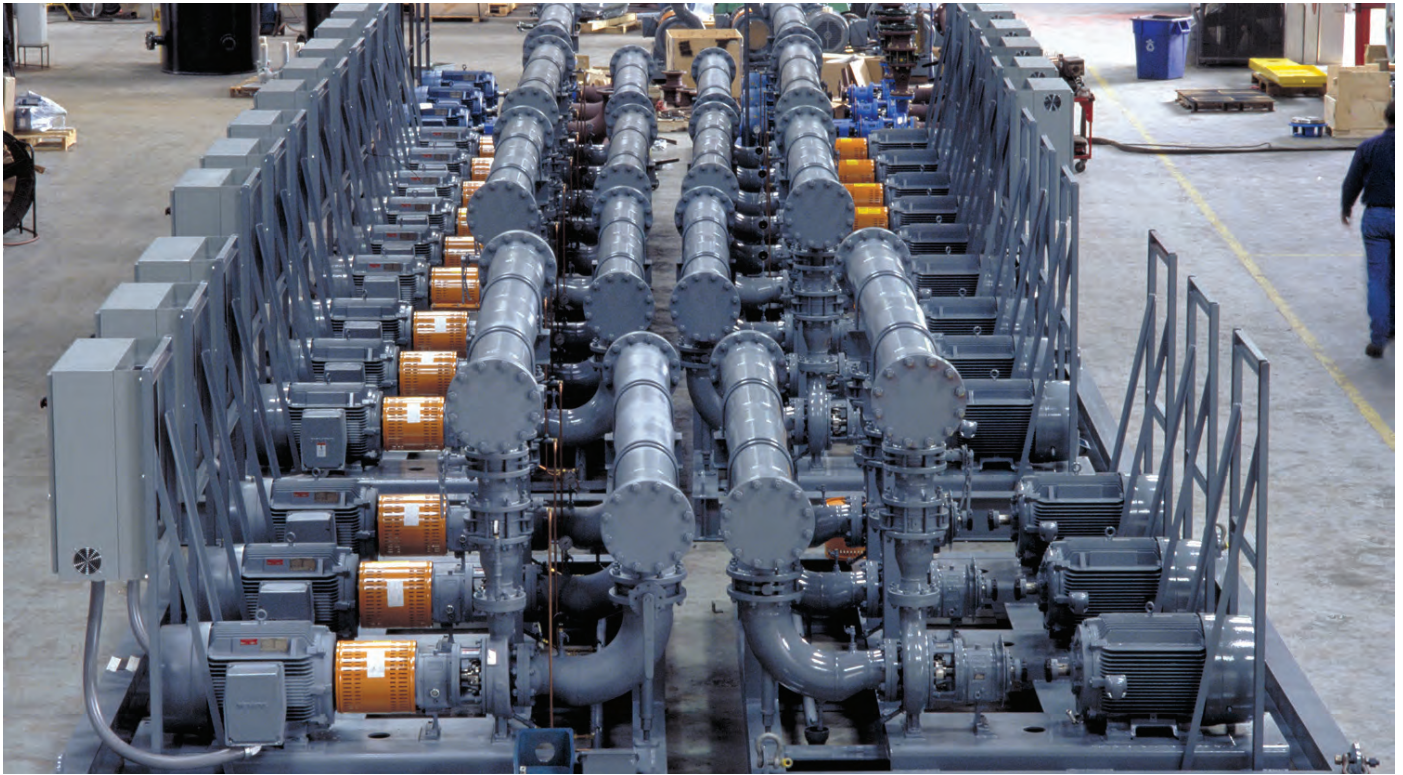
Cooling water skid consisting of three Goulds 3196XLT 6x8-13 ANSI centrifugal pumps driven by 100 HP electric motors and associated pipe, valves, fittings, instrumentation and surge tanks on a common skid.

Dry weight: 13,576 lbs.

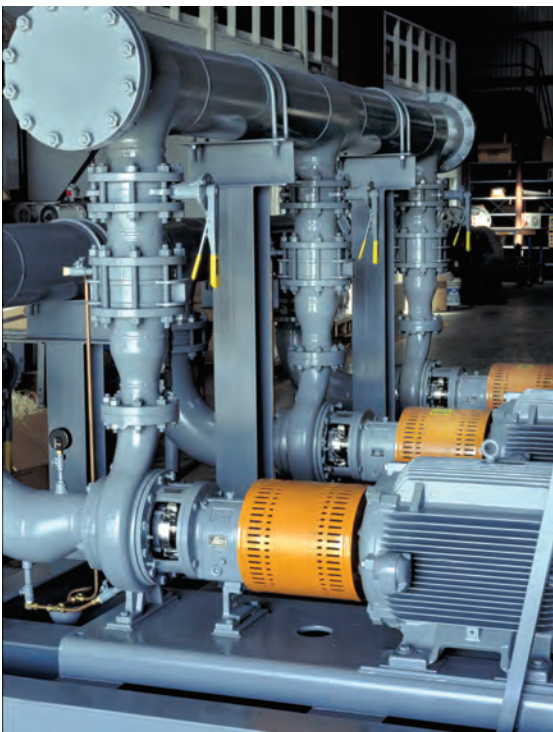


Cooling water skid consisting of a Goulds 3175 14x14-22 pump, driven through a Cotta gearbox, and direct driven by a Detroit 6064 diesel engine. Dry weight: 14,500 lbs.

Cooling Water Skids Cooling Water Skids Cooling Water Skids Cool



Cooling water skids each consisting of three Goulds 3196 LTX 4x6-10G ANSI centrifugal pumps driven by 100 HP electric motors with TB Woods AC inverters and associated pipes, valves and fittings on a common skid.
Dry weight: 11,680 lbs.



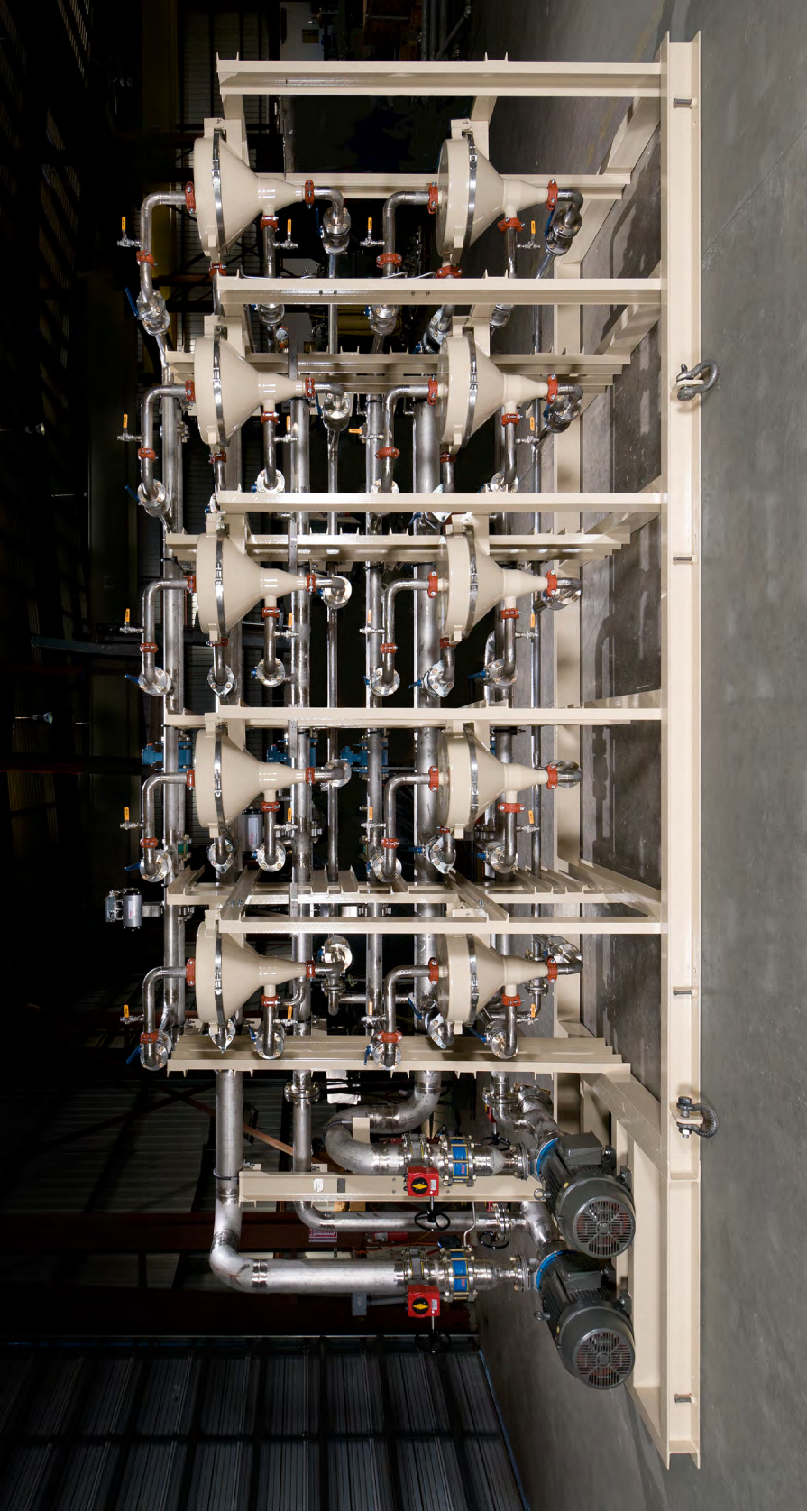
Goulds 3196 LTX 4x6-10G ANSI centrifugal pumps.



100 HP electric motors
with TB Woods AC inverters.



Misc. Packages Misc. Packages Misc. Packages Misc. Packages Misc. Pac



Produced water filter skid consisting of ten clean filtration 2" Turboclone™ Model TC-201 Filters, 316SS piping, fittings, automated valves, and instrumentation fed by two G&L Model SSH, Size 3X4-8 centrifugal pumps with 40 HP motors on a common skid.

Size: 22'L X 6.5'W X 10'H

Dry weight: 15,000 lbs.

Misc. Packages Misc. Packages Misc. Packages Misc. Packages Misc. Packages



Heat medium circulation pumps, each unit complete with Sulzer model OHH, size 4x8x26, API process pump with heat exchanger, cooled mechanical seals and casing insulation, coupled to an ABB 160 KW, 3000 RPM, 50 HZ, 690 volt electric motor mounted on a custom DXP baseplate.

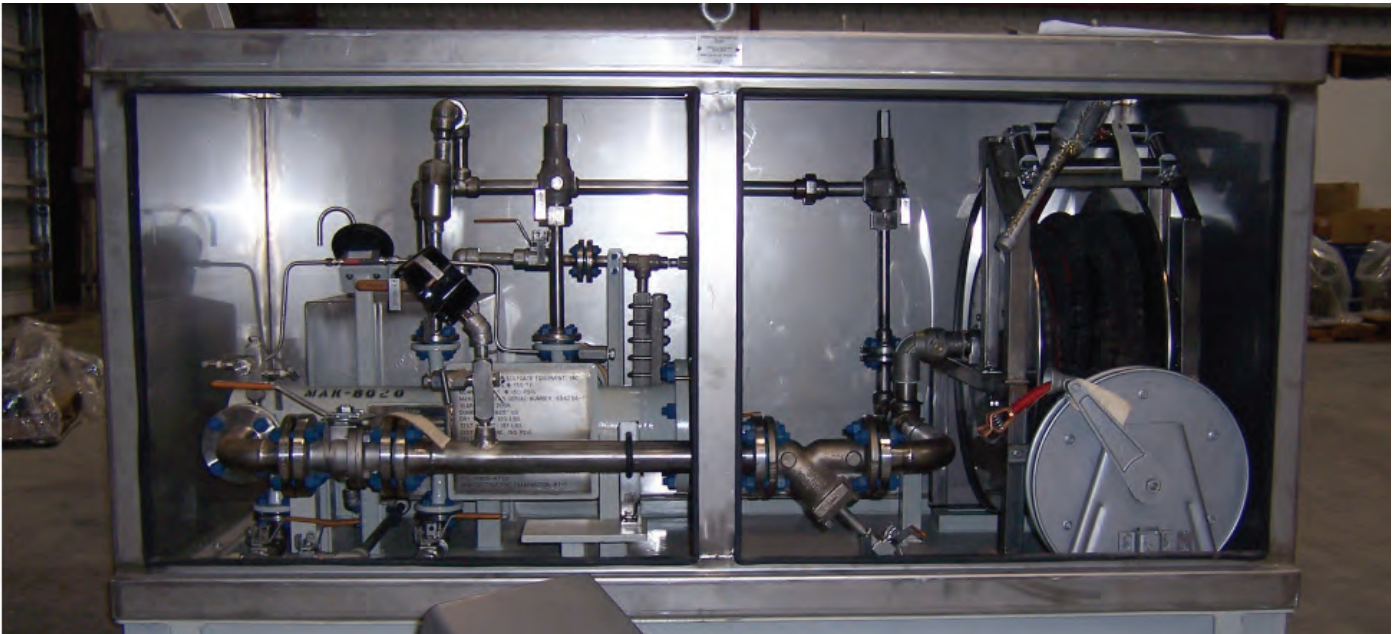


Compression suction scrubber pumps, each unit complete with Sulzer model OHH, size 1x4x14, API process pump with tandem mechanical seal, and API plan 52 seal flush, coupled to an ABB 30 KW, 3000 RPM, 50 HZZ, 690 volt electric motor mounted on a custom DXP baseplate.

kages Misc. Pckages Misc. Packages Misc. Packages Misc. Packages Mis



Helicopter refueling package consisting of a stainless steel Viking AK4197 fuel pump, 2000 gallon 316 SS fuel storage tank, 316 SS pipe, fittings and valves, fuel filter/separator, K-TEK magnetic level gauges, Bettis actuated shutdown valve, and ABS design approval. Dry weight: 15,500 lbs.



Fuel dispensing skid consisting of fuel filter monitor, counter, grounding and fuel hose reels, 316 SSS pipe, fittings and valves, 3166 SS sun cover, and ABS design approval. Dry weight: 1,745 lbs.

Misc. Packages Misc. Packages Misc. Packages Misc. Packages Misc. Packages

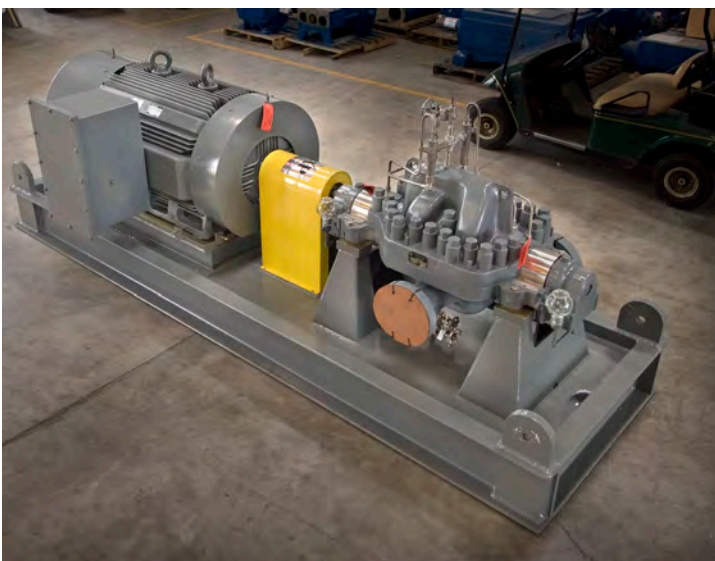
Automatic well test (AWT) Skids consisting of 12- and 6-header manifolds including piping, fittings, automated valves, instrumentation, and electrical junction box on common skids. This is one of 21 AWT skids manufactured at DXP's 529 facility on the same order.

Size: 26'L X 9'W X 9'H (12 header)

Dry weight: 17,000 lbs. (12 header)



Sump tank packages consisting of Goulds 3171 vertical pumps, 1 HP electric motor, 8" gauge hatch, vent flame arrestor, high/low level switches, ultrasonic leak detection all mounted on a 25 barrel double wall carbon steel tank.



Produced water disposal pump unit consisting of a PMI remanufactured Sulzer 4x6-10½ three stage API centrifugal pump, direct driven by a Toshiba 600 HP, TEFC electric motor.

Dry weight: 9,500 lbs.

kages Misc. Pckages Misc. Packages Misc. Packages Misc. Packages Mis



NGL product booster pump consisting of two Goulds API vertical can pumps driven by 200 HP, 3600 RPM, VSS electric motors with control valves, piping and instrumentation.

Dry weight: 27,872 lbs.

Misc. Packages Misc. Packages Misc. Packages Misc. Packages Misc. Packages

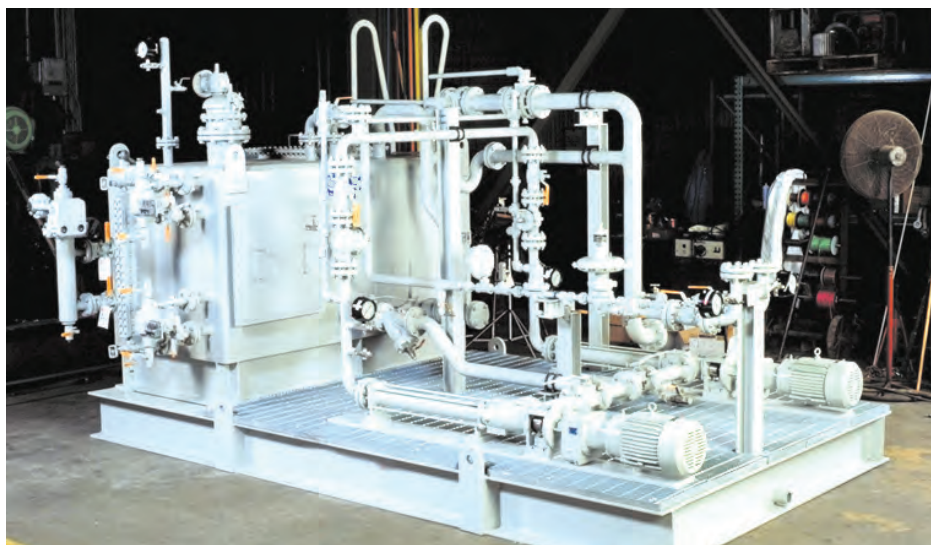


Amine sump skid package consisting of a 1180 gallon carbon steel ASME vessel with Goulds LF 3196, 1x1 ½ - 8 centrifugal pump and driven by a G.E. 7½ HP, IEEE, 841, electric motor. Unit includes piping, valves, actuated valves, and instrumentation.
Dry weight: 13,270 lbs.

kages Misc. Pckages Misc. Packages Misc. Packages Misc. Packages Mis

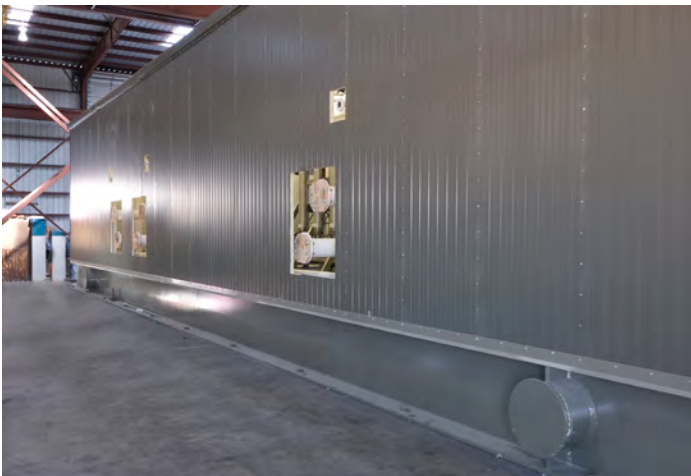


Amine and glycol tank and pump skid consisting of (2) Wilden T4 air operated diaphragm pumps, with control valves, actuated valves, piping and instruments. Dry weight: 6,700 lbs.



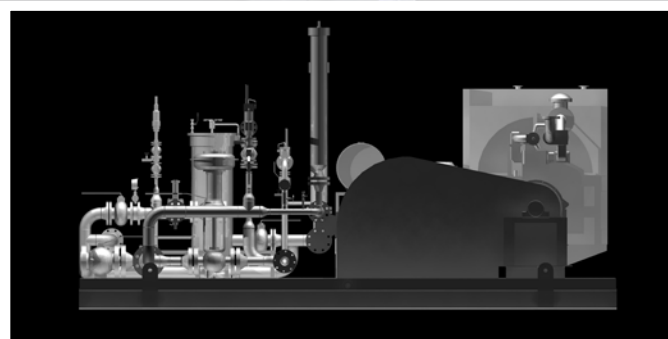
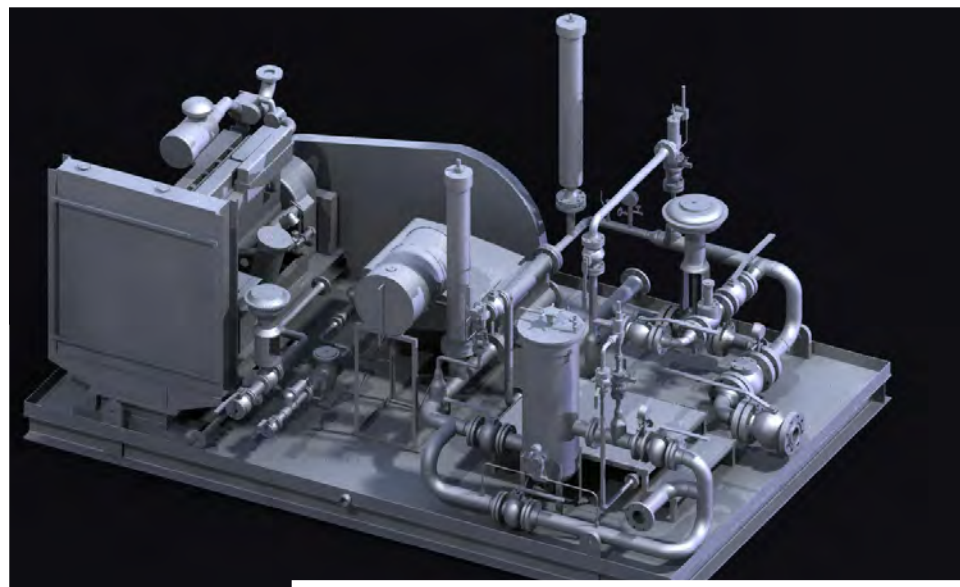
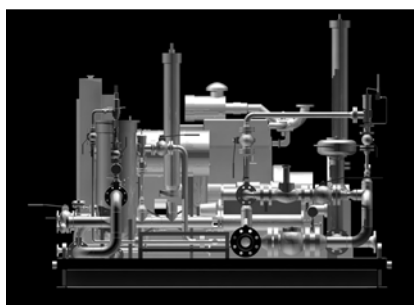
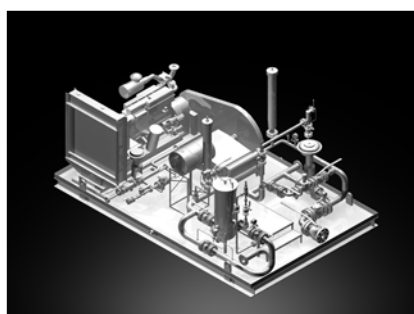
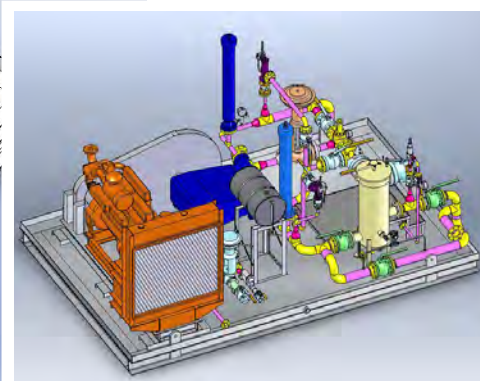
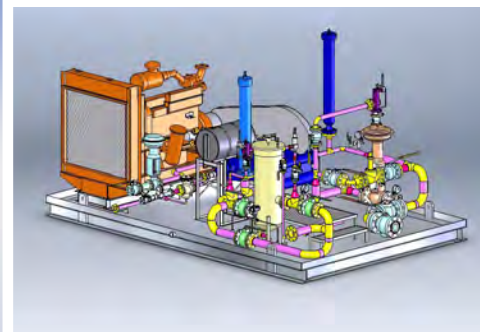
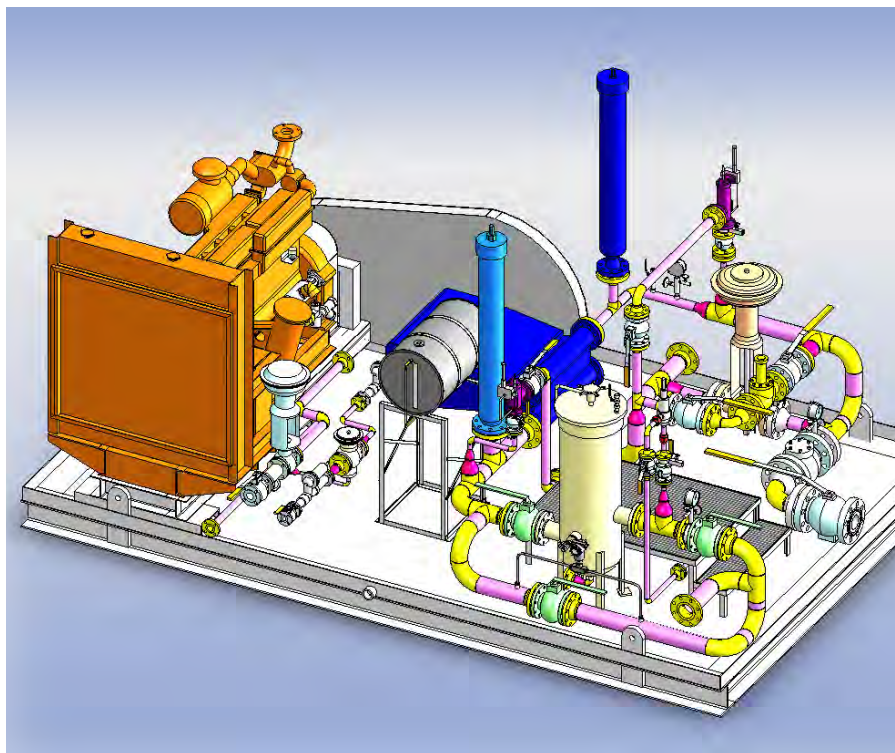
Drain tank skid consisting of (2) Seepex model 5-24 BN progressive cavity pumps driven by 7.5 HP electric motors with associated pipe, valves and fittings, and drain tank on a common skid.

Misc. Packages Misc. Packages Misc. Packages Misc. Packages Misc. Packages



Produced water pipeline skid, consisting of five National Oilwell Q4240L reciprocating plunger pumps, driven by 200HP electric motors, with associated instrumentation, pipe, valves, and fittings, mounted on a common skid inside an insulated building rated for class 1 division 2 electrical environment.
Overall skid size: 15' W x 60' L x 13' H
Gross weight: 160,000 lbs.

kages Misc. Pckages Misc. Packages Misc. Packages Misc. Packages Mis



DXP's Innovative Pumping Solutions utilizes the most up-to-date technology to meet the demands of its global customer base. Using 3D mechanical design software, DXP provides a complete design solution with verification to meet the customers needs.



A **DXP** COMPANY

PMI CAPABILITIES SUMMARY

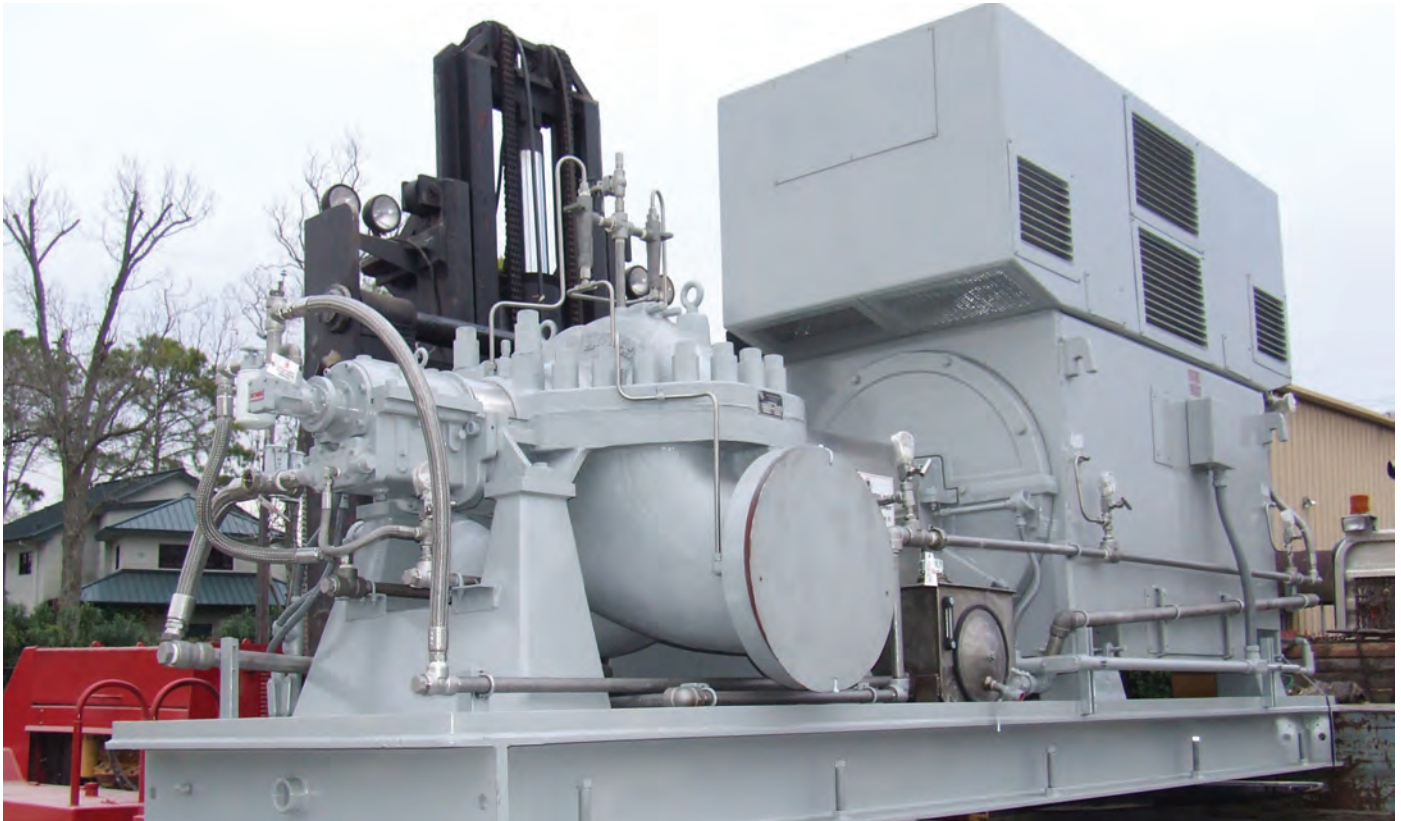
Contact Information	
Main Phone Number	713.462.3176
Main Fax Number	713.462.4097
Address	13424 Hempstead Rd. Houston, TX 77040
Sales Contact	Steven G. Reyenga J. Randy Garner
Quote Contact	Steven G. Reyenga J. Randy Garner
Production Contact	Machining & Repair: Mike Jozwiak Packaging & Fabrication: Jerry (Buck) Wright
Service Contact	Sam Karsteter
Parts & Repair Sales Contact	Mike Jozwiak
Services	
Centrifugal Pumps	Test Loop
Field Service	Engineering
Fabrication & Pump Packaging	Complete Machine Shop & Weld Shop
Pump Parts & Repair	Skids & Baseplates
Pump Re-rate & Modification	Stock Pumps for Quick Shipment
Facilities	
Total Square Footage	18,000
Production Square Footage	15,000
Office Square Footage	3,000
Yard Area	3 acres
Lifting Capabilities	15 tons
Size Limitations (LxWxH)	60'x18'x20'
Equipment	
Lathes	Radial Arm Drill
Horizontal Boring Mill	Bandsaws
Planer Mill	Rotor Stripper
Welding Machines	Bead Blaster
2 - Fork Lifts	Hydrostatic Test Bench
Overhead & Jib Cranes	Laser Alignment Computers
Service Trucks	Boom Truck



Two (2) PMI hydraulically modified and packaged United N4x11 WMSN, 6 stage heavy duty products pipeline pumps with Siemens 1500 HP, 3600 RPM electric motor drives for 55,000 barrels per day in West Texas.
Dry weight: 27,000 lbs. each.



Four (4) PMI hydraulically modified and packaged Bingham 6x6x9K MSD, 10 stage heavy case water injection pumps with Siemens VFD driven from 2,000 HP, 6,600 Volt IEC motors through Lufkin gearbox with speed range at input of 1,200 to 2,000 RPM with output from 3,250 to 5,500 RPM for running in parallel with 7,000 HP units below for 15,000 to 45,000 barrels per day in Chad, Africa.
Dry weight: 32,000 lbs. each.



One of two PMI hydraulically modified Bingham 14x14x21 KX HSB single stage, heavy duty, centrifugal, pipeline booster pumps for pumping 240,000 barrels a day (7,000 GPM) @ 1,400 feet of gasoline in a single stage requiring 3,000 HP @ 3,560 RPM.
Dry weight: 31,075 lbs. motor and skid.



One (1) of twelve (12) PMI skid mounted 1,500 HP mainline pipeline multistage centrifugal pump packages.



Five (5) PMI hydraulically modified and packaged David Brown 8x8x11 K DB34, 8 stages heavy case water injection pumps with Siemens VFD driven from 7,000 HP, 6,600 volt IEC motors thru Lufkin gearbox with speed range at input of 1,200 to 2,000 RPM with output from 3,250 to 5,500 RPM for running in parallel with 2,000 HP units above for 80,000 to 160,000 barrels per day in Chad, Africa. Dry weight: 72,000 lbs. each.



Two (2) remanufactured 400 HP VFD driven Bingham 3x6x9K MSD, 11 stage refinery grade, mixed butane, booster pumps for pipeline application in Mont Belvieu, Texas.



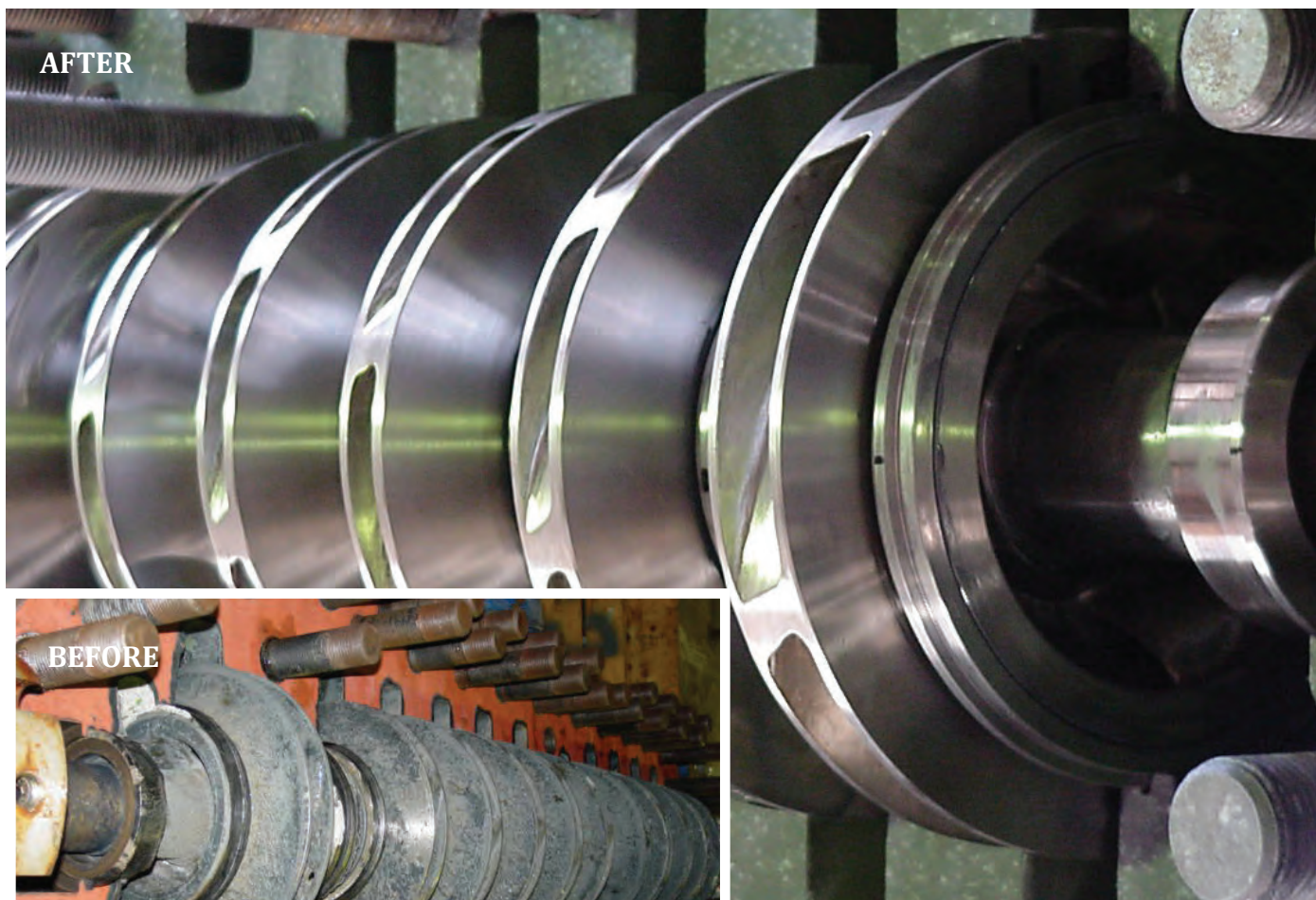
A **DXP** COMPANY

ODESSA, TX

Contact Information	
Main Phone Number	432.385.0891
Main Fax Number	432.385.0893
Address	3831 NM Loop 330 Odessa, TX 79764
Sales Contact	Joe Roemisch
Quote Contact	Joe Roemisch
Production Contact	David Barrow
Service Contact	David Barrow
Services	
Horizontal Split-Case Repair	General Machine Shop
Horizontal Split-Case Service	Mechanical Seal Repair
Project Management	Service Technician & Trouble Shooting
Vertical Turbine Repair	Vertical Turbine Service
Facilities	
Total Square Footage	10,000
Production Square Footage	6,000
Office Space Footage	1,500
Warehouse Square Footage	2,500
Yard Area	1 Acre
Lifting Capabilities	2-3 ton Bridge Crane
Equipment	
1 - 300A Miller Welding Machines	1 - Service Truck
5 - Manual Engine Lathes	1 - 10,000 lb. Fork Truck
2 - Bridgeport Mills	1 - 48"x72" Horizontal Boring Mill
Drill Press	1 - Turret Lathe
1 - Band Saw	Bead Blaster
20-ton Hydraulic Press	

SNYDER, TX

Contact Information	
Main Phone Number	325.573.1741
Main Fax Number	325.573.3471
Address	2710 25th Street Snyder, TX 79549
Sales Contact	Joe Roemisch
Quote Contact	Joe Roemisch
Production Contact	Mike Goebel
Service Contact	Peppy Perez
Services	
Application Design	Complete Valve Repair
Project Design & Management	Chemical Pump Sales & Service
LACT Unit Design, Fabrication & Repair	VRU Unit Design, Fabrication & Repair
Turnkey Design & Fabrication	Skid Design, Fabrication & Assembly
Complete Service Center	Service Technicians & Trouble Shooting
Facilities	
Total Square Footage	12,000
Production Square Footage	5,000
Office Space Footage	3,500
Warehouse Square Footage	3,500
Yard Area	3.5 Acre
Lifting Capabilities	1-3 ton, 1-5 ton Bridge Crane
Size Limitation (LxWxH)	None
Equipment	
2 - 300 A Miller Welding Machines	4 - Service Truck
2 - 250 A Miller Wire Welding Machines	1 - 9,000 lb. Fork Truck
Plasma Cutter	1 - 22,000 lb. Fork Truck
2 - Band Saws	Steam Pressure Cleaner
Bead Blaster	25'x25' Wash Bay
Drill Press	30-ton Hydraulic Press

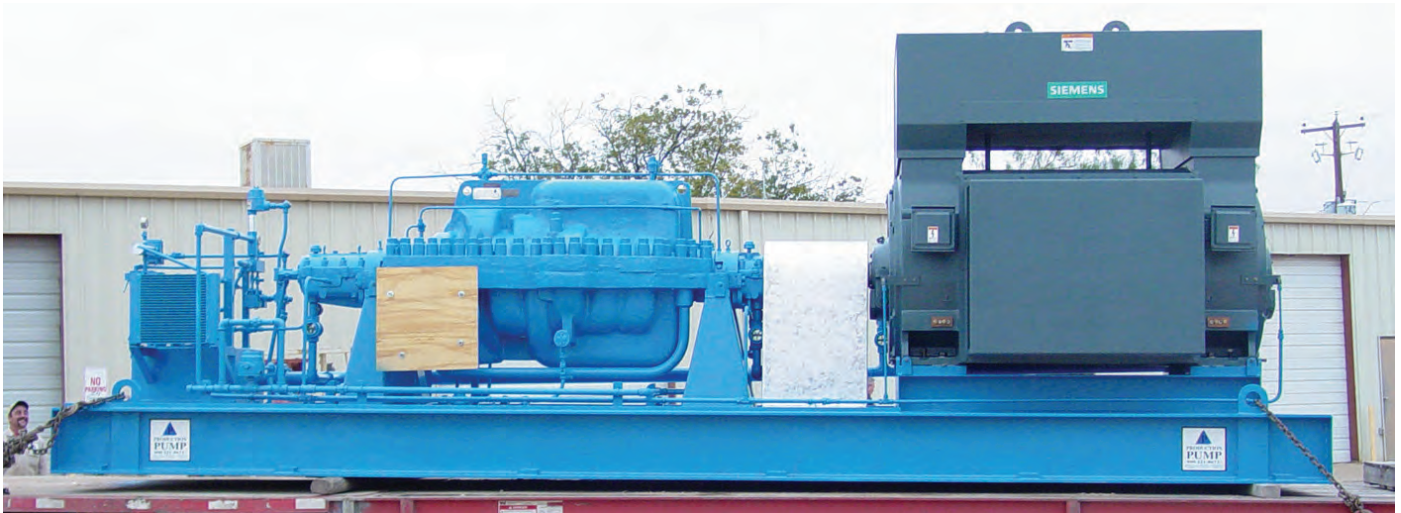


Bingham 11 stage repair

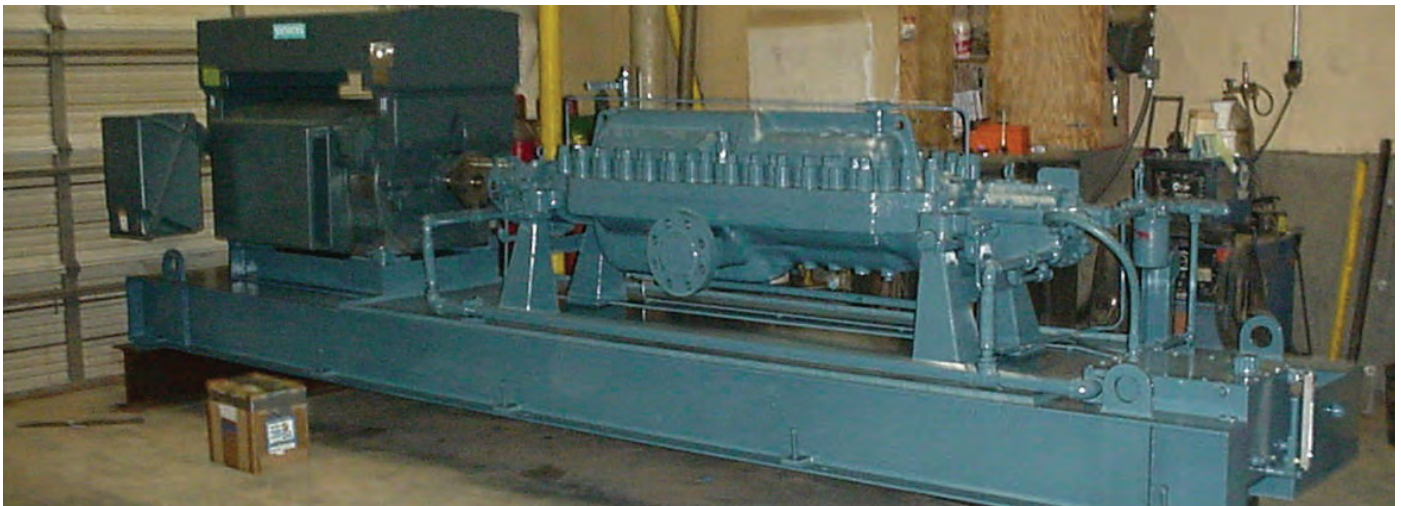


Wheatly Gaso T-100 units

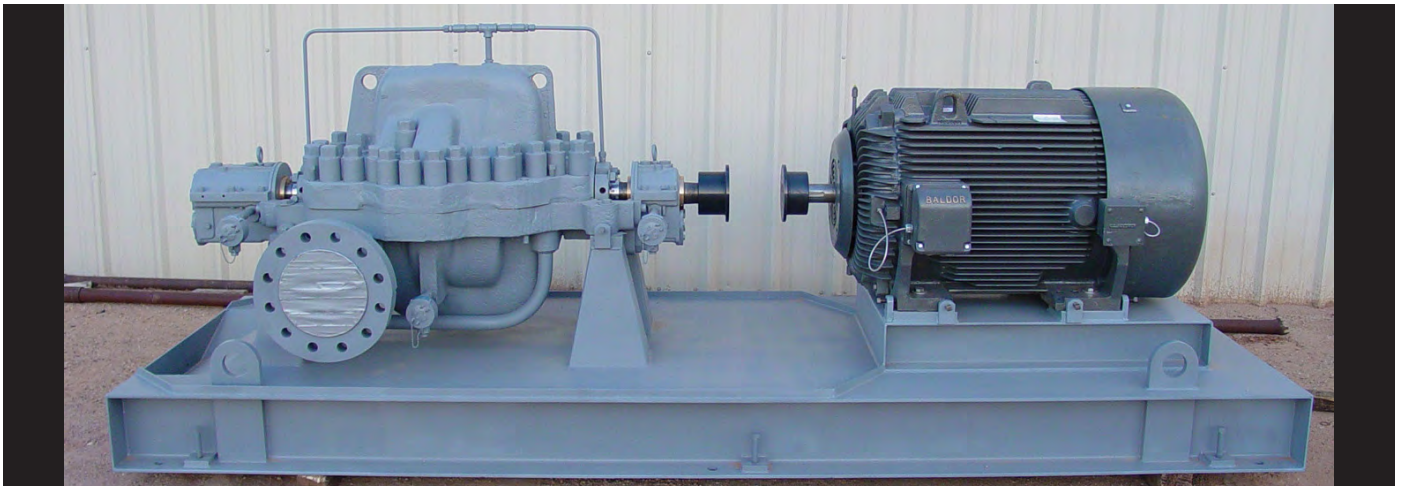




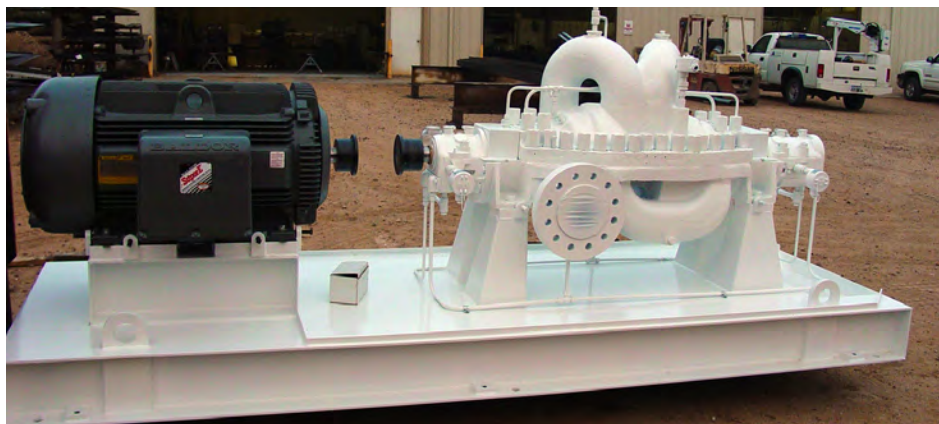
Bingham 10x12x13.5 6-stage rebuild unit with 4,000 HP motor.



Bingham 4x6 10B-MSD 12 stage unit.



Bingham 4x6x10 MSD 4 stage rebuilt unit.



Rebuilt United 4x6 2 stage unit.



20'x45' portable waterflood station.



FIBERGLASS PIPE CAPABILITIES

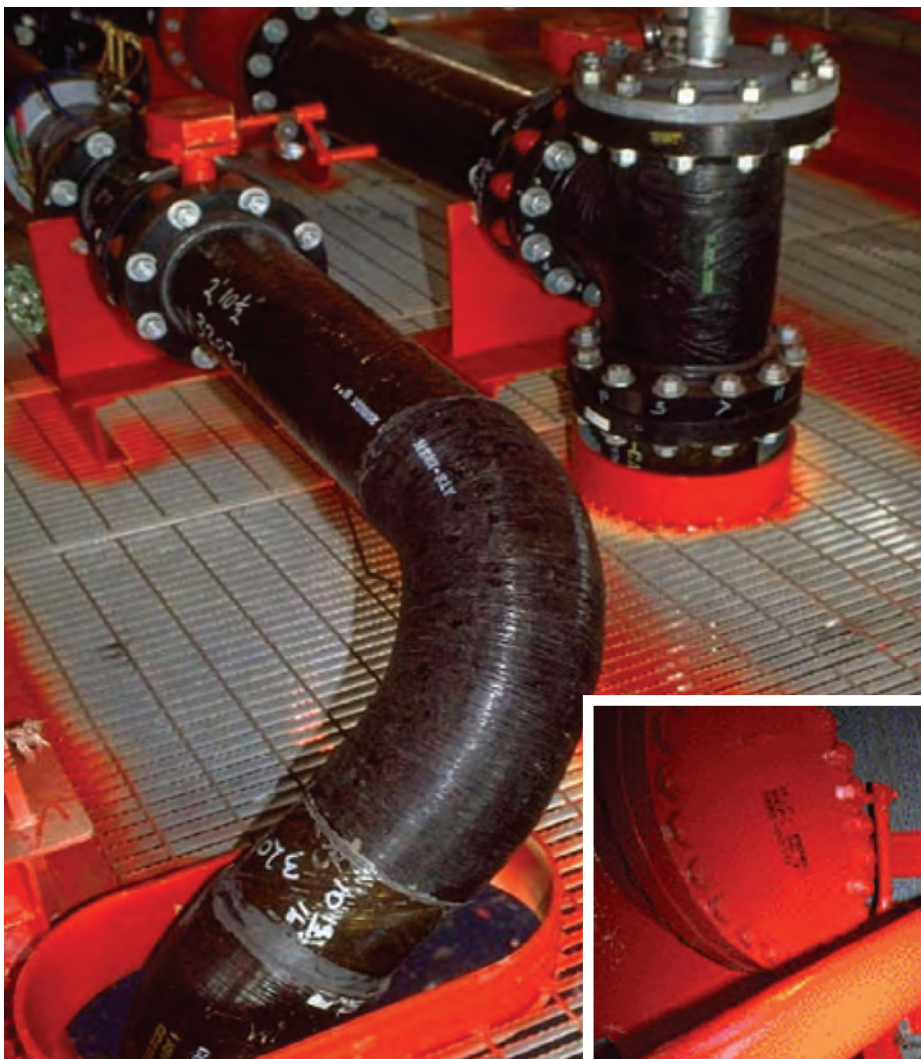
Contact Information	
Main Phone Number	504.733.7100
Main Fax Number	504.733.3310
Address	320 Time Saver Avenue Harahan, LA 70123
Services	
Application Engineering	Field Installation & Repair
Systems Design	International Capabilities
Project Engineering	Skid Assembly
Project Management	Custom Coating
Systems Troubleshooting	Testing - Hydrostatic

ENGINEERING SERVICES:

Review drawings and material take-off
 Pipe spool drawings from piping isometric
 Pipe support detailing
 Stress analysis
 Spool fabrication
 Field service
 Training

ENGINEERING DESIGN OF FRP PIPE:

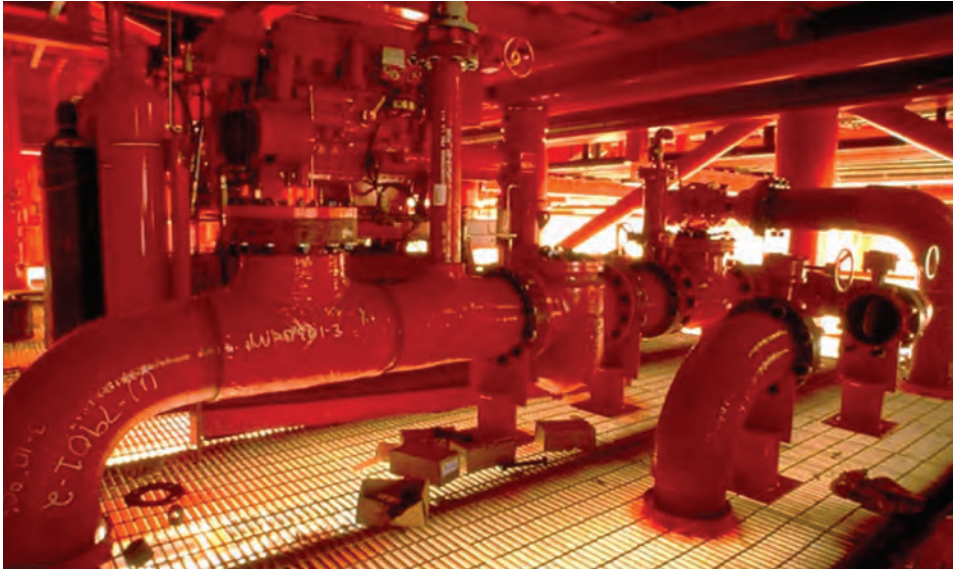
Selection of pipe type & resin
 Determine expansion and contraction
 Select spans for support
 Determine anchors, guides and support
 Stress analysis
 Vibrations
 Connections to valves & other equipment
 Water hammer/transient loads



Wet fire water 2,000M. First platform to install FRP in Deluge System in the Americas.



Typical offshore application: Fire Protection
Deluge System, 2,000M-FP.



PSX-L3

PSX-JF, dry fire water line



Deck drain 2,000 M



7,000 M - 40" seawater header



Fire water 2,000 M

